

24/112 Alfred Street Sans Souci, NSW



Resort-style living in beachside setting

Discover the epitome of coastal elegance with this meticulously crafted 2 bedroom townhouse, located within the highly sought-after 'South Beach' Complex in Sans Souci. Offering a harmonious blend of luxury and practicality, this residence boasts an array of premium features to elevate your living experience and promises an unparalleled lifestyle by the sea. With direct access to the beach across The Grand Parade and positioned within walking distance from all of Ramsgate Beach's amenities, this private oasis is the epitome of convenient beachside living. Why holiday when you can return to your own resort every day?

- Open plan living/dining with herringbone flooring throughout
- CaesarStone kitchen equipped with Miele appliances and gas cooking
- Enclosed alfresco entertaining area featuring a BeefEater BBQ
- Ducted air-conditioning, downstairs W/C, European laundry
- Main bedroom featuring ensuite, balcony, and water views
- Secure basement car space with an additional storage cage
- Resort-style facilities including BBQ area, pool and kids playground

Inspect: Saturday, 25th May 2024 12:00 - 12:30

Price: FOR SALE | Shaun Ramani
Council Rates: \$394.00 p/q
Water Rates: \$171.00 p/q
Strata Rates: \$1,124.00 p/q



Shaun Ramani

0417 444 919



Aari Bouboulos

0447 573 902



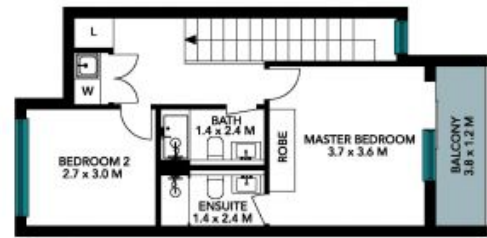
Site Plan



(NOT IN POSITION)



Ground Floor



First Floor



The site plan and floor plan are not to scale; measurements are indicative and in metres. Bushes and trees are placed for illustration purposes. Plans should not be relied on. Interested parties should make and rely on their own enquiries. All other information provided has been collected from reliable sources but cannot be guaranteed for accuracy.



Ground Floor



First Floor



The floor plan is not to scale; measurements are indicative and in metres. All features included in this 3D plan are for inspiration purposes only. This is not an exact replica of the property or the position of exterior elements. Plans should not be relied on. Interested parties should make and rely on their own enquiries.