



1/492 Blaxland Road Denistone, NSW



Elegant townhome equipped for modern living

Proudly set with glorious street elevation, this residence beckons immediate family comfort, with attractive, stylish interiors and the flexibility of a downstairs bedroom or extra living area. Offering a compelling, low-maintenance lifestyle, it's nestled within walking distance of Eastwood station and shops and in the catchment for Denistone East Public and Marsden High School.

- Open plan lounge/dining flows to a private side patio and secure, gated yard
- Sleek kitchen with a gas stove, s/s appliances and engineered timber flooring
- Generous master retreat features a WIR and luxurious ensuite with rain shower
- Three more sizeable bedrooms, all with built-in robes and ample natural light
- Indulgent, fully tiled family bathroom with a soaking bathtub and rain shower
- Single auto garage, internal laundry with external access, ducted, zoned a/c
- Nearby private schools, approx. 500m to St Therese's, 1.7km to Marist Eastwood
- Approx. 1.1km to Eastwood Station and shopping precinct, 600m to Ryde Hospital

Price: Sold prior to auction

Council Rates: \$362.00 p/q

Water Rates: \$171.41 p/q



Brian Kong

0435 333 383

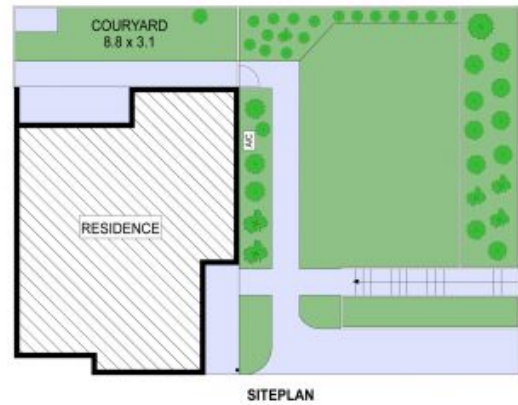
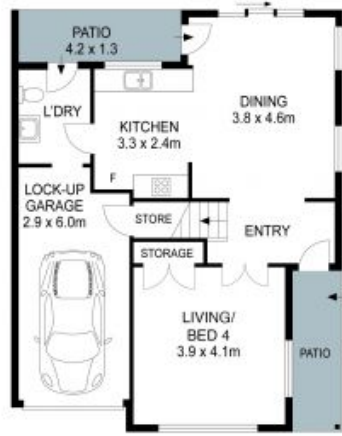


Kevin Dearlove

0403 338 302

1/492 Blaxland Road, Denistone

3  2  1  179m²



THIS IS AN ARTIST'S IMPRESSION - ALL DIMENSIONS, LAYOUTS AND TREES ARE APPROXIMATE
ALL INTERESTED PARTIES SHOULD MAKE AND RELY ON THEIR OWN ENQUIRIES

