



2a Hampden Lane Kurri Kurri, NSW



Freestanding home, laneway location, lovely yard

Catering to the needs of downsizers, new buyers and investors, this quality standalone home combines all the elements essential to comfortable modern living; a single-level design, generous dimensions and a lovely lawned yard - all putting functionality top of mind. Claiming a well-connected laneway position, it's hard to believe Kurri Kurri CBD is just 600m from the door.

Price:

Contact Agent



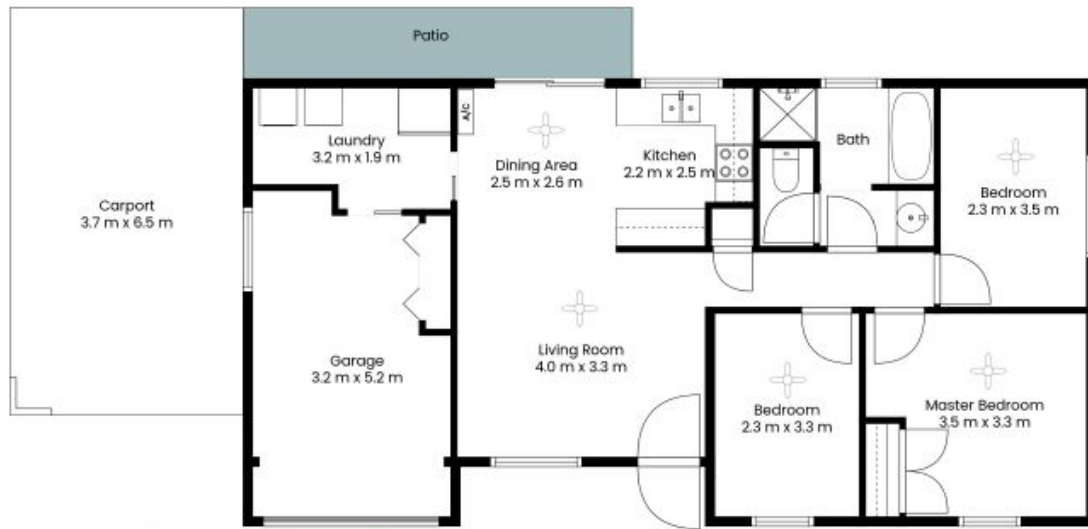
Renee Bean-Wyper

0403 325 076



Jorja Pauling

0435 930 665



Site Map

The site plan and floor plan are not to scale; measurements are indicative and in metres. Bushes and trees are placed for illustration purposes. Plans should not be relied on, interested parties should make and rely on their own enquiries. All other information provided has been collected from reliable sources but cannot be guaranteed for accuracy.

