

STONE



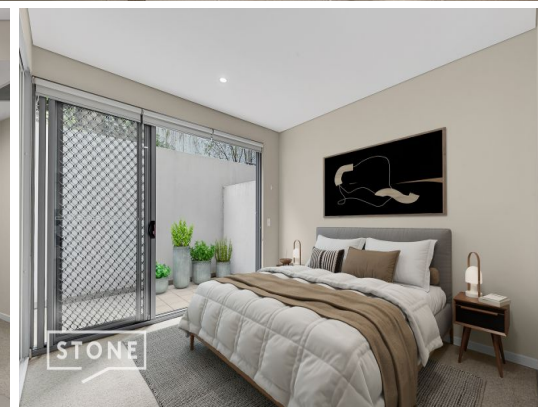
STONE



STONE



STONE



STONE

14/62 Gordon Crescent Lane Cove North, NSW



## Courtyard Living

This exquisite first-floor courtyard apartment in 'Gardenia Lane Cove' boasts the natural advantage of a north-facing rear, seamless indoor-outdoor flow, and high-quality finishes. Set opposite Batten Reserve and within easy reach of eateries, transport, and shops, this executive-class home delivers excellent lock-and-leave ease and promises a lifestyle of style and convenience.

- Spacious private courtyard for all-weather entertaining, includes a gas hob
- Open plan lounge and dining seamlessly connect to courtyard via glass doors
- Luxuriously appointed kitchen with Miele s/s appliances and a gas stove
- Generous carpeted bedroom featuring mirrored built-in and courtyard access
- Modern bathroom boasts a spacious shower and elegant floor-to-ceiling tiles
- Easily accessible single car space, a storage cage, plenty of visitor parking
- Euro-style laundry, ducted air conditioning, video intercom, and roller blinds
- Approx. 270m Chatswood buses, 450m caf?, 1.7km Lane Cove Mkt Square

**Auction:** 08/06/2024 01:00 pm

**Price:** Guide \$580,000

**Council Rates:** \$373.00 p/q

**Water Rates:** \$171.00 p/q

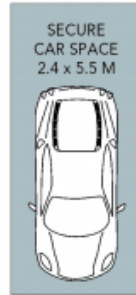
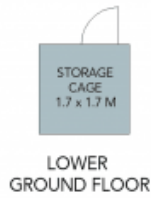
**Strata Rates:** \$880.00 p/q



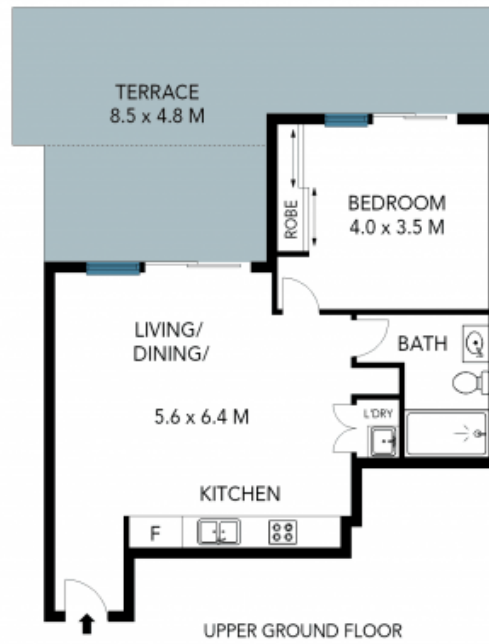
**Vincent Goh**

0412 316 797

14/62 Gordon Crescent  
Lane Cove North



UPPER BASEMENT



Internal Size: 77sqm  
Total Size: 93sqm



The site plan and floor plan are not to scale; measurements are indicative and in metres. Bushes and trees are placed for illustration purposes. Plans should not be relied on. Interested parties should make and rely on their own enquiries. All other information provided has been collected from reliable sources but cannot be guaranteed for accuracy.