



20/700-704 Victoria Road Ryde, NSW



## Panoramic City Views

Breathtaking city-views and captivating pinnacle of 180° vista above Ryde, this newly refreshed residence promises a rare and remarkable lifestyle with its light filled ambience and ultra convenient location. Holding CBD buses, wharf ferries, Putney and Top Ryde shops and eateries all within a walk or short drive, it's desirably situated for the perfect carefree lock-and-leave base - plus a mesmerising skyline especially on New Year's Eve!

- Beautifully private with leafy views and an uninterrupted view of Sydney CBD
- Open plan living and dining featuring warm floorboards and pendant lightings
- Elevated undercover balcony presenting divine district and city views
- Modern kitchen with gas cooking, dishwasher and cavernous pantry
- Two sizeable bedrooms with built-in robes, main bedroom with ceiling fan
- Updated bathroom with separate shower and bath, R/C air-conditioning
- Laundry amenities, allocated car space plus visitor parking, huge linen press
- Well positioned for Ryde Public, St Charles Catholic, parks and nature trails

**Inspect:**

**Auction:** 08/06/2024 09:45 am

**Price:** Guide \$650,000

**Council Rates:** \$334.00 p/q

**Water Rates:** \$171.00 p/q

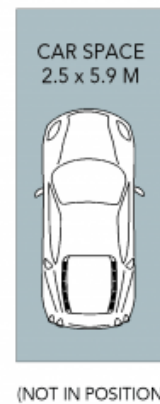
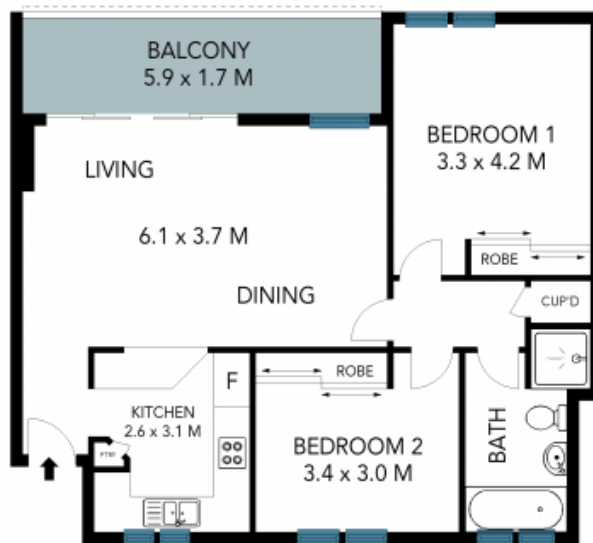
**Strata Rates:** \$856.50 p/q



**Vincent Goh**

0412 316 797

20/700-704 Victoria Road,  
Ryde



The site plan and floor plan are not to scale; measurements are indicative and in metres. Bushes and trees are placed for illustration purposes. Plans should not be relied on. Interested parties should make and rely on their own enquiries. All other information provided has been collected from reliable sources but cannot be guaranteed for accuracy.