

3008/311 Hume Highway Liverpool, NSW



Modern Living

Offering a blend of luxury and modern living, this two-bedroom apartment is nestled in the heart of Liverpool. With its prime location, high-end finishes and contemporary design combine to create an unparalleled living experience.

Price: \$570,000 - \$595,000



Andrew Diadyk

0422 164 657

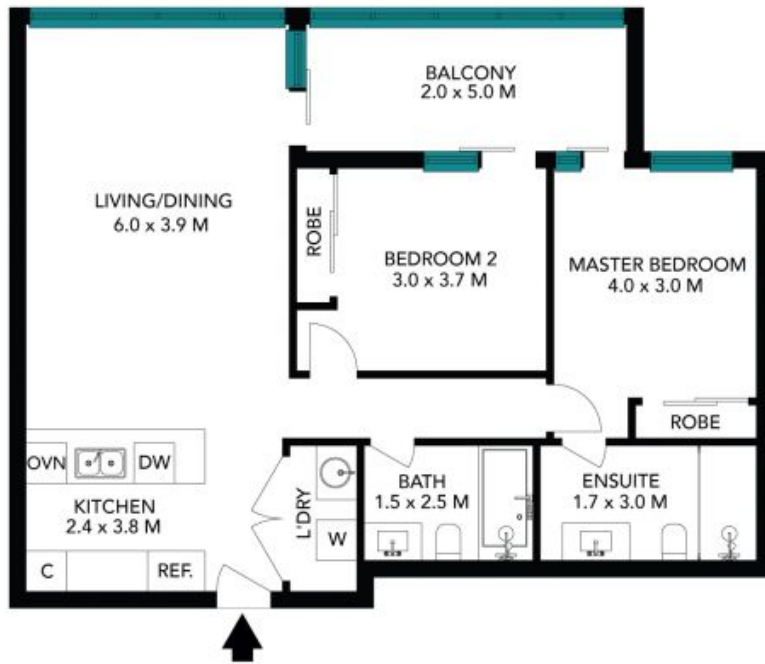


Danyal Mushtaq

0479 178 429

3008/311 Hume Highway
Liverpool

STONE



(NOT IN POSITION)



(NOT IN POSITION)



The floor plan is not to scale, measurements are indicative and in metres. Certain elements are not in position. Plans should not be relied on. Interested parties should make and rely on their own enquiries. All other information provided has been collected from reliable sources but cannot be guaranteed for accuracy.

3008/311 Hume Highway
Liverpool



The floor plan is not to scale; measurements are indicative and in metres. All features included in this 3D plan are for inspiration purposes only. This is not an exact replica of the property or the position of exterior elements. Plans should not be relied on. Interested parties should make and rely on their own enquiries.