



6/2-10 Sloane Street Newtown, NSW



Renovated end of row townhouse in a prime location

Tucked away in one of Newtown's quietest streets and located at the rear of a secure block of only 10 townhouses. Within moments you will find yourself at the very heartbeat of both Newtown and Enmore and everything else we love about our pocket of Sydney.

- Two Spacious bedrooms w/built-ins, master w/balcony
- Generous open living and dining space with polished floors boards throughout
- Updated kitchen with ample cupboard space and dishwasher
- Brand new state of the art designer bathroom
- Internal laundry with an extra toilet
- Front Courtyard and rear private alfresco retreat
- Secure off street parking for two car
- Pets will be considered on application

Price: Deposit taken
Bond: \$3,720
Available Date: 26/04/2024



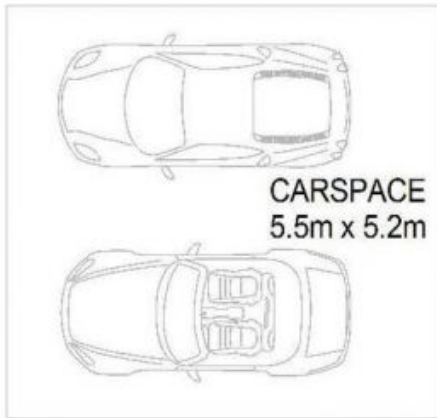
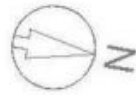
Olivia Makhlof

0412 630 727

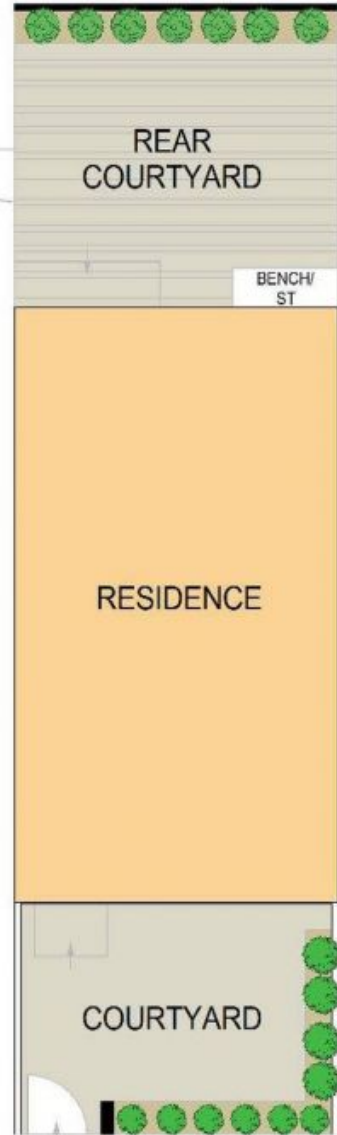


Paul Alam

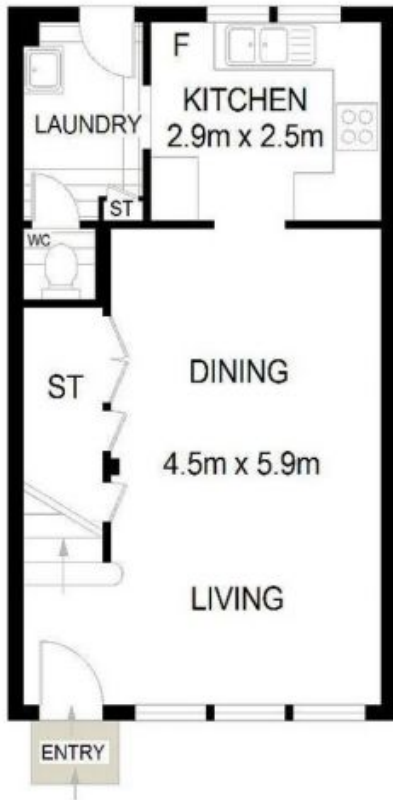
0422 004 969



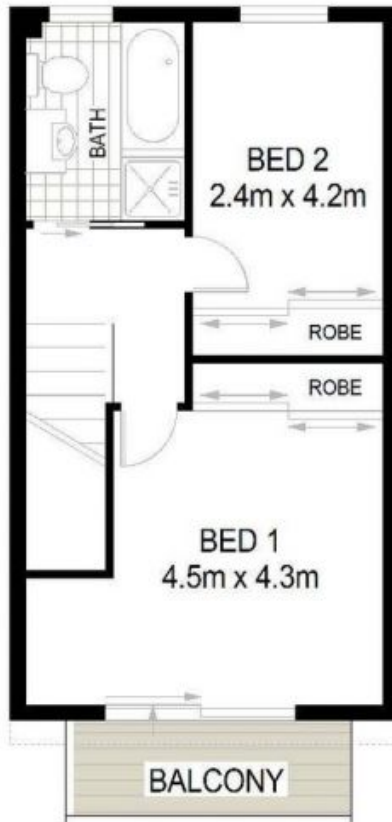
UNDER GROUND LEVEL



SITE PLAN
(NOT TO SCALE)



GROUND LEVEL



FIRST LEVEL