



22 Sir Thomas Mitchell Drive Davidson, NSW

4

3

3

Immaculate Living

Elevated from the street, this solid dual level family home captures stunning panoramas over the district to Chatswood and the City from multiple rooms. The tightly held home is immaculately presented placed on a N/E to rear 714.5 sqm (approx.) and offers a flexible floorplan with an optional family room or 4th bedroom with an adjoining bathroom. The bus, school and parks are moments away.

- Quiet setting high-side from the street with inviting light infused interiors
- Timber floorboards, generous formal lounge and dining with superb views
- Front deck, casual meals room, modern kitchen with timber cabinetry
- Sun soaked partially covered rear alfresco terrace, natural rock garden
- Platform at the rear with stunning views, generous beds, most with robes
- Master suite with views and ensuite, large family room/optional 4th bed with fireplace
- Bathroom near the family room, internal access 3 car garage, workshop
- 80m to the bus, 750m to Kambora Public School, 1.5km to Glenrose shops

David Hayden 0414 505 111
Claudia Macdonald 0452 223 034

Price: Contact Agent



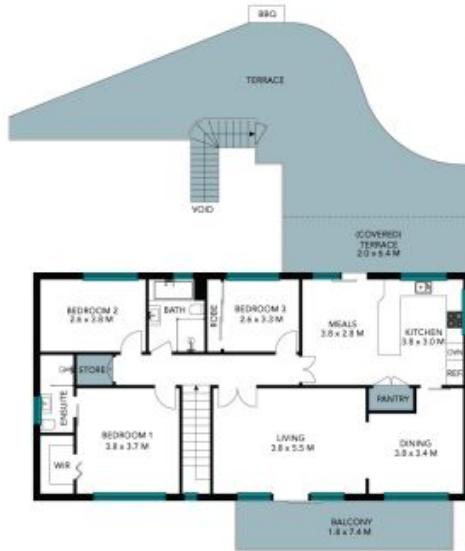
David Hayden
0414 505 111



Claudia Macdonald
0452 223 034



Site Plan



Upper Level



Lower Level



The site plan and floor plan are not to scale; measurements are indicative and in metres. Bushes and trees are placed for illustration purposes. Plans should not be relied on. Interested parties should make and rely on their own enquiries. All other information provided has been collected from reliable sources but cannot be guaranteed for accuracy.

22 Sir Thomas Mitchell Drive
Davidson



Upper Level

Lower Level



The floor plan is not to scale; measurements are indicative and in metres. All features included in this 3D plan are for inspiration purposes only. This is not an exact replica of the property or the position of exterior elements. Plans should not be relied on. Interested parties should make and rely on their own enquiries.