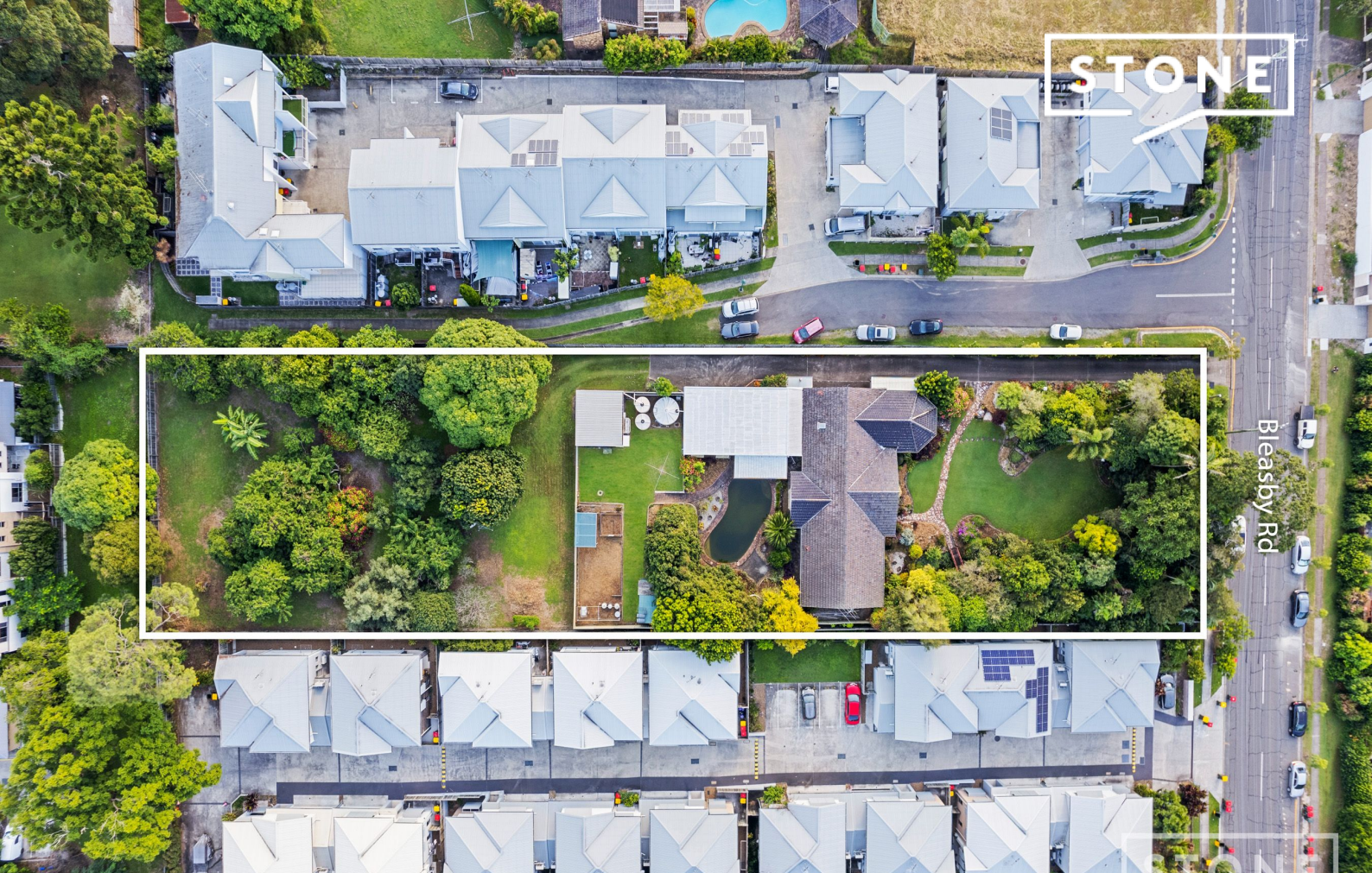


STONE



Bleasby Rd



40 Bleasby Road Eight Mile Plains, QLD

4 2 2

### Prime acreage estate with redevelopment potential, 15 minutes from Brisbane CBD

Offered to the market for the first time in over six decades, this exceptional property presents a rare opportunity to acquire a substantial estate among a blue-ribbon acreage precinct, just a 15 minute drive from the Brisbane CBD.

Nestled on a vast 1-acre block and surrounded by exquisite edible landscapes featuring Mango, Custard Apple, and Avocado, which have been celebrated as Brisbane's most beautiful gardens on multiple occasions, this immediately-liveable low-set brick residence comes with enormous scope for a renovation, rebuild, or impressive redevelopment potential for 20 town homes (STCA).

... This property is being sold by tender all offers need to be in 12.00pm Monday the 13th of May....

... Additional highlights:...  
- Edible gardens incl. Custard apple, Mango, Sapote, Quince, Star Fruit, Avocado, Jabotica...

**Inspect:** Saturday, 11th May 2024 10:00 - 11:00

**Price:** Sale By Tender



**Jason Savage**  
0401 546 762



**Cameron Rice**  
0408 885 251



**40 Bleasby Road, Eight Mile Plains**

Internal Size: 206sqm | External: 191sqm | Total Size: 397sqm



Jason Savage | 0401 546 762

This floor plan is for illustrative purposes only. Whilst every attempt has been made to ensure the accuracy of this floor plan, all measurements are approximate only. No responsibility is taken for any errors, omission or mis-statement. Potential purchasers should make their own enquiries as to the accuracy of this floor plan.