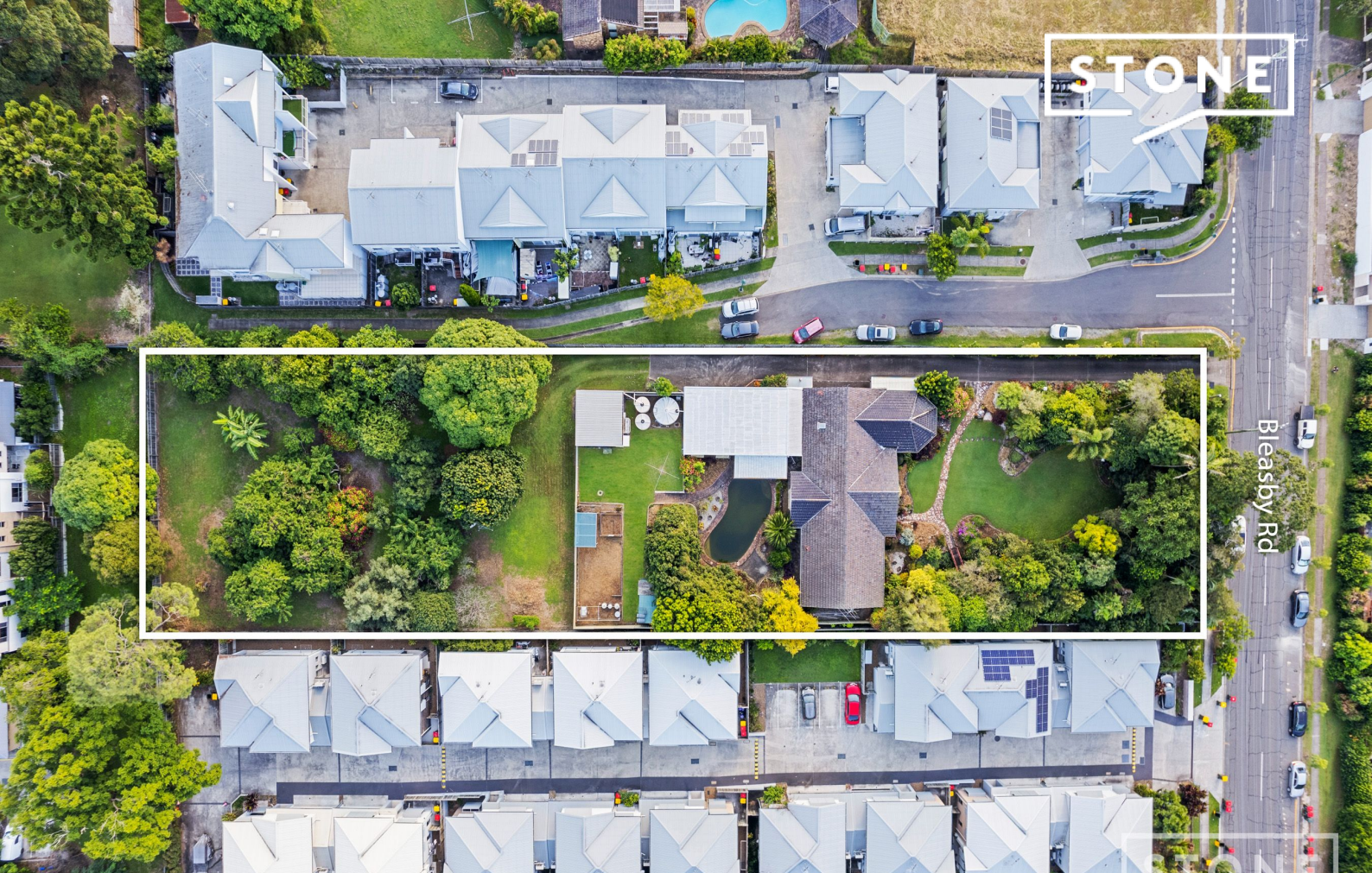


STONE



Bleasby Rd



40 Bleasby Road Eight Mile Plains, QLD

4 2 2

Prime acreage estate with redevelopment potential, 15 minutes from Brisbane CBD

Offered to the market for the first time in over six decades, this exceptional property presents a rare opportunity to acquire a substantial estate among a blue-ribbon acreage precinct, just a 15 minute drive from the Brisbane CBD.

Nestled on a vast 1-acre block and surrounded by exquisite edible landscapes featuring Mango, Custard Apple, and Avocado, which have been celebrated as Brisbane's most beautiful gardens on multiple occasions, this immediately-liveable low-set brick residence comes with enormous scope for a renovation, rebuild, or impressive redevelopment potential for 20 town homes (STCA).

Additional highlights:...

- Lot dimensions approx. 126m x 32m frontage
- 5-bay secure garage parking, exceptional storage throughout

All information contained within this website is gathered from sources we believe to be re...

Price: Contact Jason



Jason Savage
0401 546 762



Cameron Rice
0408 885 251



40 Bleasby Road, Eight Mile Plains

Internal Size: 206sqm | External: 191sqm | Total Size: 397sqm



Jason Savage | 0401 546 762

This floor plan is for illustrative purposes only. Whilst every attempt has been made to ensure the accuracy of this floor plan, all measurements are approximate only. No responsibility is taken for any errors, omission or mis-statement. Potential purchasers should make their own enquiries as to the accuracy of this floor plan.