

STONE



14/232-240 Ben Boyd Road Cremorne, NSW



Modern Studio with Car Space!

Nestled within the highly sought-after 'Andean' building, this impeccable freshly painted studio apartment boasts an enviable position. Offering direct street access and a charming courtyard, this residence is thoughtfully designed for both comfort and convenience.

Price:

Contact Agent



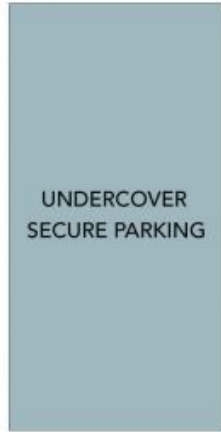
Eddie Tremolada

0411 744 478

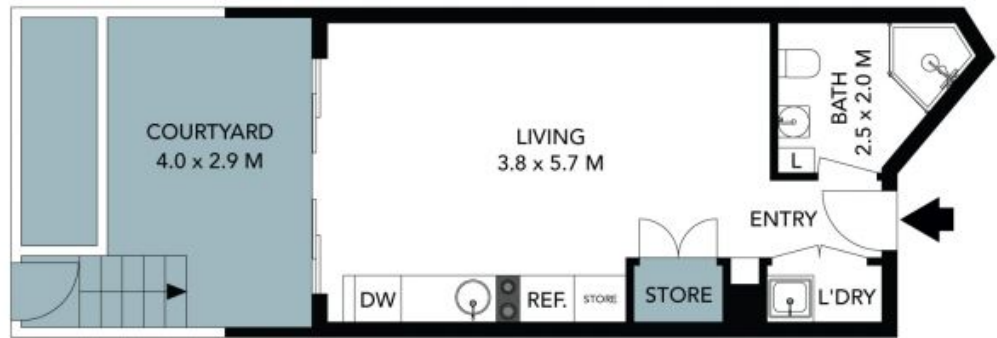


Suzi Zadel

0411 321 771



(NOT IN POSITION)



The floor plan is not to scale, measurements are indicative and in metres. Certain elements are not in position. Plans should not be relied on. Interested parties should make and rely on their own enquiries. All other information provided has been collected from reliable sources but cannot be guaranteed for accuracy.

14/232-240 Ben Boyd Road
Cremorne



The floor plan is not to scale; measurements are indicative and in metres. All features included in this 3D plan are for inspiration purposes only. This is not an exact replica of the property or the position of exterior elements. Plans should not be relied on. Interested parties should make and rely on their own enquiries.

