

STONE



14/232-240 Ben Boyd Road Cremorne, NSW



## Modern Studio with Car Space!

Nestled within the highly sought-after 'Andean' building, this impeccable freshly painted studio apartment boasts an enviable position. Offering direct street access and a charming courtyard, this residence is thoughtfully designed for both comfort and convenience.

Key features include:

- Expansive open-plan studio layout
- Sun-drenched private courtyard with exclusive gated entry to the street
- Galley-style kitchen equipped with a sleek gas cooktop and granite countertops
- Secure undercover parking space with lift access
- Internal laundry facilities for added convenience
- Exceptional communal amenities including beautifully landscaped gardens and BBQ areas

This presents an outstanding opportunity to own a property mere steps away from public transportation and the vibrant hub of Neutral Bay Village. With its proximity to an array of dining options, cafes, supermarkets, as well as easy access to the Sydney CBD, this property appeals to first-time buyers, urban dwellers seeking a pied-?-terre, and savvy investor...

Price:

Contact Agent



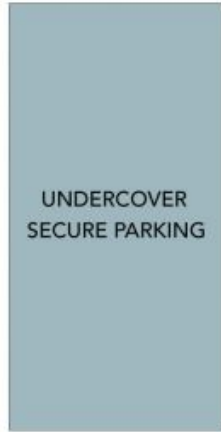
**Eddie Tremolada**

0411 744 478

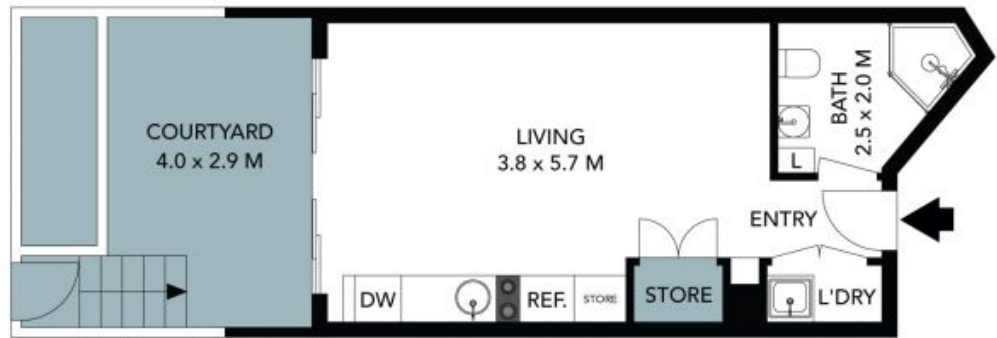


**Suzi Zadel**

0411 321 771



(NOT IN POSITION)



The floor plan is not to scale, measurements are indicative and in metres. Certain elements are not in position. Plans should not be relied on. Interested parties should make and rely on their own enquiries. All other information provided has been collected from reliable sources but cannot be guaranteed for accuracy.

14/232-240 Ben Boyd Road  
Cremorne



The floor plan is not to scale; measurements are indicative and in metres. All features included in this 3D plan are for inspiration purposes only. This is not an exact replica of the property or the position of exterior elements. Plans should not be relied on. Interested parties should make and rely on their own enquiries.

