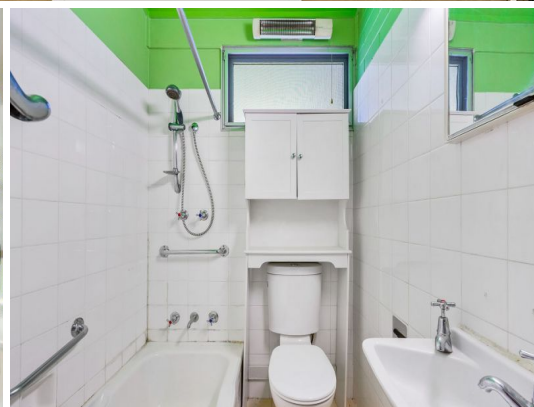


STONE



6/47 Woodvale Avenue North Epping, NSW



### One Bedroom Quiet Location

Well positioned apartment only moments away from metro buses to Epping shops/station/bus interchange, Macquarie Shopping Centre, Business Park and University. This unit has a good sized bedroom with built in wardrobe, internal laundry and a large private courtyard.

Featuring:

- Bedroom with built ins and the ambiance of sloped ceilings
- Combined lounge open plan to full kitchen
- Polished floor boards and ceiling fans
- Well-presented bathroom with internal laundry
- Large private courtyard garden perfect for entertaining
- Covered car port right in front of unit
- Close to public transport, local school and shops

**Price:** \$420.00 pw

**Available Date:** 27/04/2024

**STONE** Leasing Team  
02 9630 8899