



24 Esdale Street Wavell Heights, QLD

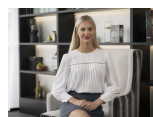
3  1  1 

Price: For Sale Now



Tristan Rowland

0411 572 970



Kate Veal

0455 333 306

INTERNAL 82 SQM
EXTERNAL 65 SQM
TOTAL 147 SQM



The site plan and floor plan are not to scale, measurements are indicative and in metres. Bushes and trees are placed for illustration purposes. Plans should not be relied on. Interested parties should make and rely on their own enquiries.

24 Esdale Street, Wavell Heights

Stoneaspley.com.au

