



24 Esdale Street Wavell Heights, QLD

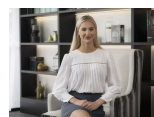
3 1 1

Price: For Sale Now



**Tristan Rowland**

0411 572 970



**Kate Veal**

0455 333 306



**INTERNAL** 82 SQM  
**EXTERNAL** 65 SQM  
**TOTAL** 147 SQM



The site plan and floor plan are not to scale, measurements are indicative and in metres. Bushes and trees are placed for illustration purposes. Plans should not be relied on. Interested parties should make and rely on their own enquiries.

24 Esdale Street, Wavell Heights

Stoneaspley.com.au

