



508/1-9 Torrens Avenue The Entrance, NSW



Modern and Spacious with Pool and Great Ocean / Beach Views.

Step into luxury with this stunning 2-bedroom, 2-bathroom residence boasting an abundance of space, style and located in the heart of The Entrance. This meticulously crafted apartment invites you into a realm of contemporary elegance and coastal charm, nestled in a secure building with a private underground car space. Indulge in the epitome of coastal living just moments away from the glistening shores.

Enjoy spacious bedrooms, thoughtfully designed to offer a sanctuary of comfort and tranquility, with ample space and natural light providing the perfect retreat after a day of seaside adventures. Pamper yourself in the sleek and modern bathrooms, featuring modern fittings and finishes that elevate your daily routine.

...

Conveniently situated just 200 meters from the beach, shops, and charming cafes, seize the opportunity to immerse yourself in the vibrant coastal lifestyle. Explore the local markets, indulge in fresh seafood delicacies or simply stroll along the shoreline and feel the ...

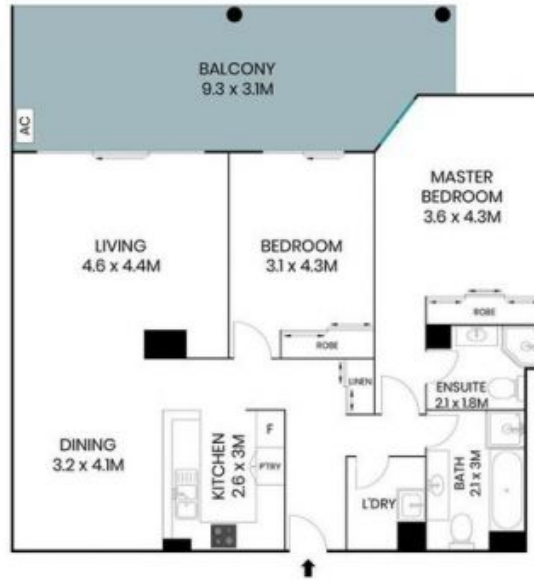
Price: Guide \$675,000
Council Rates: \$272.20 p/q
Water Rates: \$228.22 p/q



David Lyle

0408 440 010

508/1-9 Torrens Ave
The Entrance



Internal Area: 93.99sqm
External Area: 25.77sqm



The site plan and floor plan are not to scale; measurements are indicative and in metres. Bushes and trees are placed for illustration purposes. Plans should not be relied on. Interested parties should make and rely on their own enquiries. All other information provided has been collected from reliable sources but cannot be guaranteed for accuracy.