



107 Rode Road Wavell Heights, QLD 3 3 2

Quintessential Queenslander

Where heritage charm meets modern convenience, exuding timeless elegance and architectural grandeur. Built in 1923 this property boasts potential city views from 5m and adorned with ornate fretwork to its polished timber floors and soaring ceilings, this home captures the essence of Queensland living at its finest. Welcome home to your sanctuary in Wavell Heights.

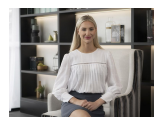
- Large 913sqm block
- City view potential from 5m
- North/south facing aspect
- Vulcan electric hot water system 250L
- Town gas connected
- 2x Large water tank with electric pumps
- Large under house storage
- Growatt solar system

Price: For Sale Now



Tristan Rowland

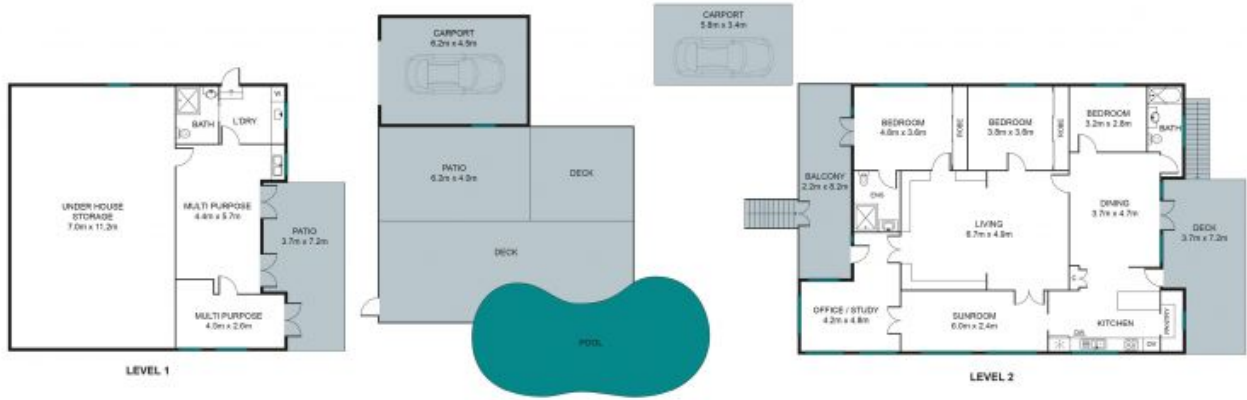
0411 572 970



Kate Veal

0455 333 306

LEVEL 1	125 SQM
LEVEL 2	156 SQM
EXTERNAL	226 SQM
TOTAL	507 SQM



The site plan and floor plan are not to scale, measurements are indicative and in metres. Bushes and trees are placed for illustration purposes. Plans should not be relied on, interested parties should make and rely on their own enquiries.

107 Rode Road, Wavell Heights

Stoneaspley.com.au

