



6/37 Slade Road Bardwell Park, NSW

2

1

Investors and first home buyers opportunity

This top floor apartment is situated directly opposite Slade Road Reserve. With an urban village lifestyle, one can enjoy the conveniences of its central location.

Price:

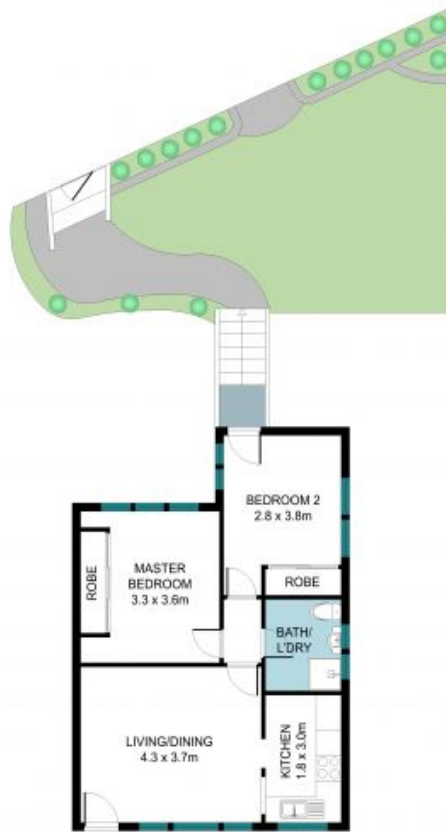
SOLD \$570,000



George Karafotias

0405 436 336

6/37 Slade Road
Bardwell Park



The site plan and floor plan are not to scale; measurements are indicative and in metres. Bushes and trees are placed for illustration purposes. Plans should not be relied on. Interested parties should make and rely on their own enquiries. All other information provided has been collected from reliable sources but cannot be guaranteed for accuracy.