

11/6 Fairway Close Manly Vale, NSW

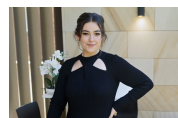


### Treetop tranquility and vibrant beachside living

Sunshine and gentle cross breezes flow through this apartment that capitalises on its unique parkland setting and maximises every aspect of its outdoor and indoor living spaces. Comprehensively refurbished and set on the top floor of a boutique complex, this residence enjoys treetop views with the very best of beachside living and urban centrality.

- Designer kitchen and Bosch appliances
- Caesarstone island and breakfast bar
- Bedrooms with built-in wardrobes, floor to ceiling glass and twin balconies
- Modern family bathroom and ample storage
- Plush carpeted bedrooms, lustrous timber floors in kitchen and living areas
- Bespoke blinds, recessed lighting, immaculate and superbly finished throughout
- Next to a park and playground on a peaceful cul de sac, off street parking
- Adjacent to parklands, waterways, golf, 550 metres to Boy Charlton Swim Centre

**Price:** Leased  
**Available Date:** 25/05/2024



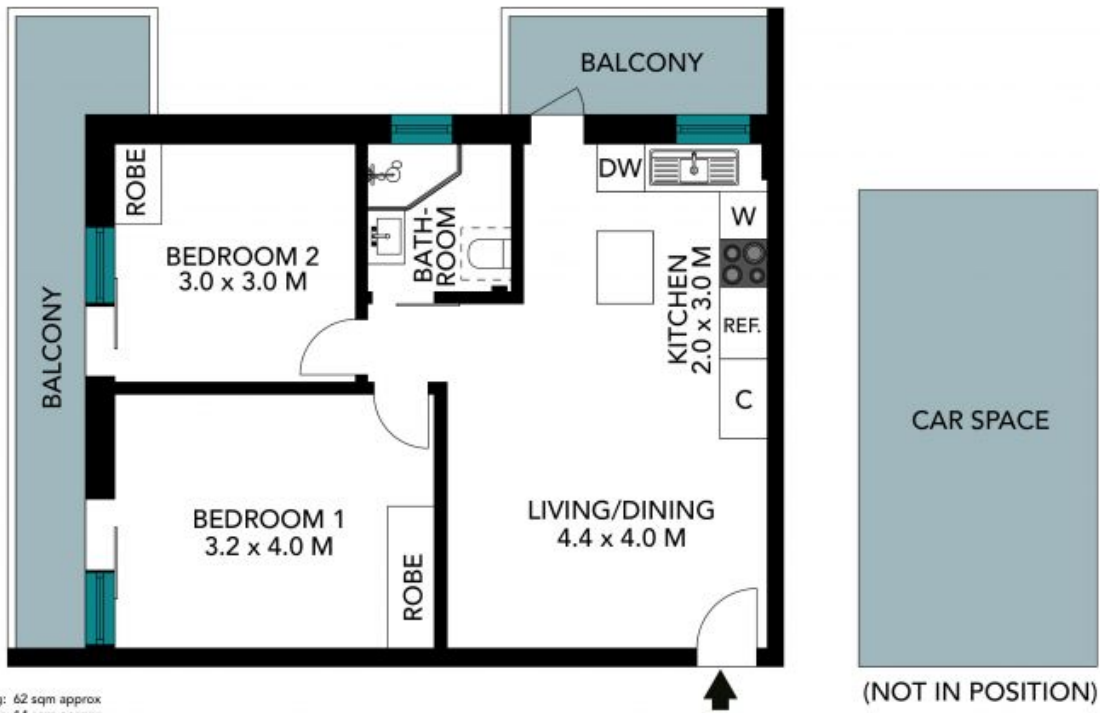
**Alicia Sudol**

02 9949 2822



**Sarah Cass**

0472 682 954



Internal Living: 62 sqm approx  
 External Living: 14 sqm approx  
 Total Living Area: 76 sqm approx

The floor plan is not to scale; measurements are indicative and in metres. Exterior elements are not in position. Plans should not be relied on. Interested parties should make and rely on their own enquiries. All other information provided has been collected from reliable sources but cannot be guaranteed for accuracy.



11/6 Fairway Close, Manly Vale





Internal Living: 62 sqm approx  
External Living: 14 sqm approx  
Total Living Area: 76 sqm approx

The floor plan is not to scale, measurements are indicative and in metres. All features included in this 3D plan are for inspiration purposes only. This is not an exact replica of the property or the position of exterior elements. Plans should not be relied on. Interested parties should make and rely on their own enquiries.



11/6 Fairway Close, Manly Vale

