



2/7 Eyre Place Mount Colah, NSW



Cosy duplex in a serene bush-scape setting

This one-bedroom duplex offers the perfect opportunity for those seeking low-maintenance living outside of bustling apartment complexes. Set in a tranquil bush-scape setting, this home offers an unprecedented opportunity to live in a quiet cul-de-sac. Don't miss your chance to secure your spot in one of Mount Colah's most highly sought after pockets at an affordable price!

Price: \$500 Per week

Bond: \$2,000

Available Date: 06/05/2024



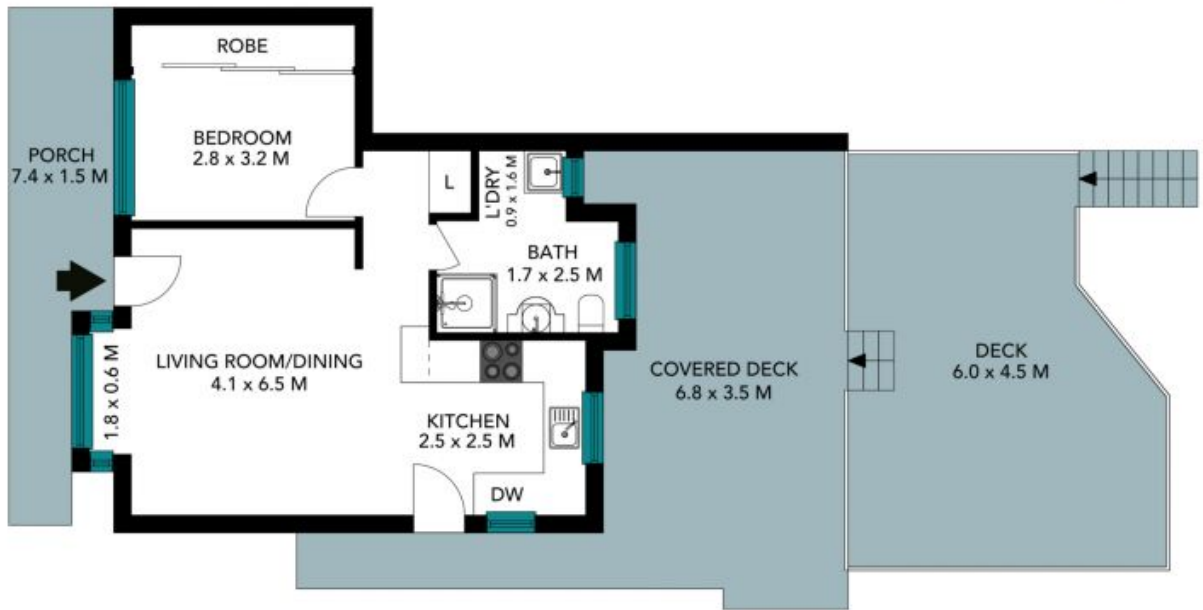
Brad Sargent

0413 773 423

2/7 Eyre Place
Mount Colah



The floor plan is not to scale; measurements are indicative and in metres. All features included in this 3D plan are for inspiration purposes only. This is not an exact replica of the property or the position of exterior elements. Plans should not be relied on. Interested parties should make and rely on their own enquiries.



The floor plan is not to scale, measurements are indicative and in metres, feature elements are not in position. Plans should not be relied on. Interested parties should make and rely on their own enquiries. All other information provided has been collected from reliable sources but cannot be guaranteed for accuracy.