

B801/572 Princes Highway Rockdale, NSW



Convenient 2-Bedroom Apartment

Enjoy district views and a spacious layout in this convenient apartment. Positioned on the eighth floor, it offers elevated views and ample natural light. The well-designed layout seamlessly connects the open-plan kitchen and living area to a breezy balcony.

With floorboards and modern finishes throughout, you can choose to customise or move straight in without requiring further investment. The property boasts prime centrality, with convenient access to trains just a short stroll away, Rockdale Plaza within 500 meters, and an array of dining options nearby. Savvy buyers will appreciate the value of this property, located only 12 kilometers from the CBD and a little over 2 kilometers from Lady Robinson's Beach.

Property Features

- Two bedrooms with master WIR & ensuite and built-ins
- Open-plan living flows to balcony with uninterrupted district views

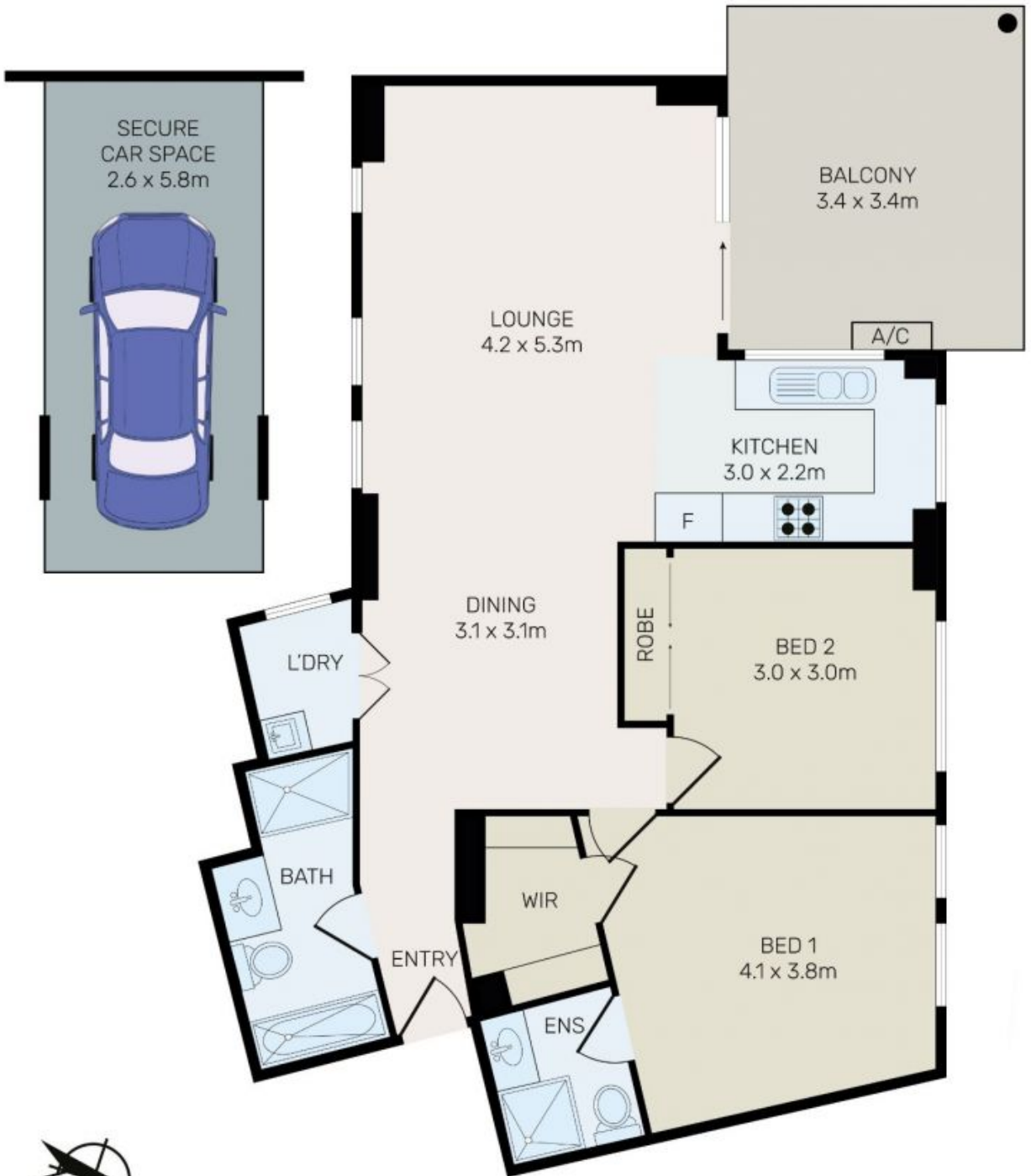
Price:

FOR SALE \$650,000 TO \$ 700,000



George Kambouroglou

0422 421 111



All information contained herein is gathered from all sources we believe to be reliable. However we cannot guarantee its accuracy and interested parties should rely on their own enquiries.



B801/572 Princes Highway, Rockdale