



20810/63 Blamey Street Kelvin Grove, QLD

3

2

2

Widescreen Views

With 180 degree views of the CBD framed by untouched greenery this rare abode is nestled in the vibrant heart of Kelvin Grove. Experience the pinnacle of luxury living boasting unparalleled views of both the city and the serene greenery of nearby parks. Situated within walking distance of all amenities and attractions, this residence offers a seamless blend of convenience, sophistication, and natural beauty.

- City and park views
- South/East facing unit
- Secure building with swipe access
- 2 large glistening in-ground pools
- 3 BBQ areas
- Fully equipped on-site gym
- On-site Management
- Strata Rates \$5,026.71pa approx.

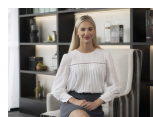
Price:

For Sale Now



Tristan Rowland

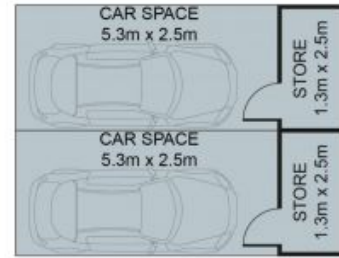
0411 572 970



Kate Veal

0455 333 306

INTERNAL 101 SQM
EXTERNAL 49 SQM
TOTAL 150 SQM



(NOT IN POSITION)

The site plan and floorplan are not to scale; measurements are indicative and in metres. Bushes and trees are placed for illustration purposes. Plans should not be relied on. Interested parties should make and rely on their own enquiries.

20810/63 Blamey Street, Kelvin Grove

stonespley.com.au