

1/492 Pacific Highway Wyoming, NSW 3 2 1

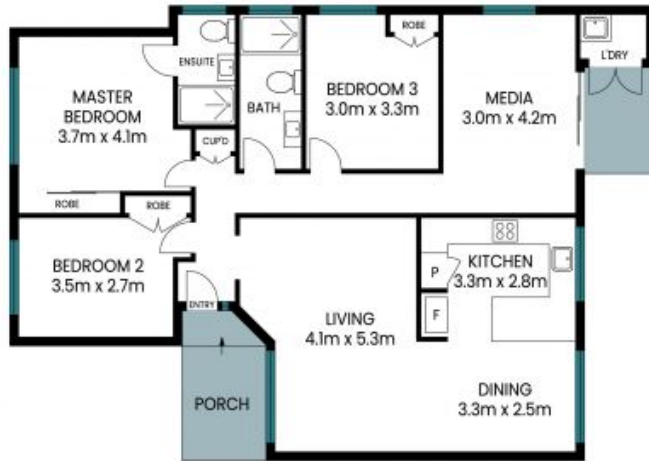
Immaculate Freestanding Villa

Perfectly located, 1/492 Pacific Highway presents a contemporary haven of comfort and style. Step inside to discover a light-filled interior adorned with sleek finishes and modern design elements. The open-plan layout seamlessly connects the living, dining, and kitchen areas, providing the perfect space for relaxation and entertainment. With three generously sized bedrooms, additional study/media room, this villa offers both space and privacy for families, couples or down sizers seeking a new home in a fantastic area with your own private low-maintenance courtyard.

Price: \$705000



Brian Milson
0411 381 220



Site Plan

Internal Area: 108 sqm
External Area: 29 sqm
Total Area: 137 sqm

PLEASE NOTE: These Floor and Site Plans have been generated for marketing purposes and are to be used as a guide only. While all care is taken, no guarantee can be given in respect of accuracy, sizes and dimensions are approximate, actual may vary

