

86 Ellery Parade Seaforth, NSW

5

3

2

### Perfect aspect, perfect flow, perfect location

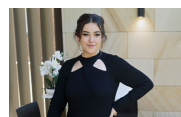
Designed by Albert Hogget Architects with a focus on light, space and perfectly-integrated indoor/outdoor living, this expansive, elegant family home is instantly inviting. Offering a selection of living and entertaining zones, the spaces work together to deliver a relaxed and luxurious living experience. Perfectly positioned on a 789sqm block on the high side of one of Seaforth's blue ribbon streets and offering a box seat to panoramic district and harbour views as well as fingertip access to Manly and the city, this exceptional home presents the ultimate in effortless family living and entertaining.

**Price:** Leased  
**Available Date:** 14/06/2024



**Sarah Cass**

0478 086 411



**Alicia Sudol**

0459 996 944



Internal Living: 314 sqm  
External Living: 124 sqm  
Total Living Area: 438 sqm



The site plan and floor plan are not to scale; measurements are indicative and in metres. Bushes and trees are placed for illustration purposes. Plans should not be relied on. Interested parties should make and rely on their own enquiries. All other information provided has been collected from reliable sources but cannot be guaranteed for accuracy.

86 Ellery Parade  
Seaforth



Top Floor



Lower Ground Floor



Ground Floor

Internal Living: 314 sqm  
External Living: 124 sqm  
Total Living Area: 438 sqm



The floor plan is not to scale, measurements are indicative and in metres. All features included in this 3D plan are for inspiration purposes only. This is not an exact replica of the property or the position of exterior elements. Plans should not be relied on. Interested parties should make and rely on their own enquiries.