

Virtual Furniture

9/53 King Street Wollstonecraft, NSW

2 1 1

SOLD BY TEAM HILL

Peaceful park-side apartment with panoramic views
 Positioned on the entire top floor with no common walls and expansive leafy views stretching to The Blue Mountains, this apartment delivers a readymade haven in a prime location. Bright and spacious with three breezy aspects, schemed with stylish modern finishes and extending to an elevated balcony with enchanting views, it sits directly opposite picturesque Brennan Park within a four minute stroll of Waverton Village and rail.

Price: Contact Agent
Council Rates: \$310.00 p/q
Water Rates: \$171.00 p/q
Strata Rates: \$1,161.00 p/q



David Hill

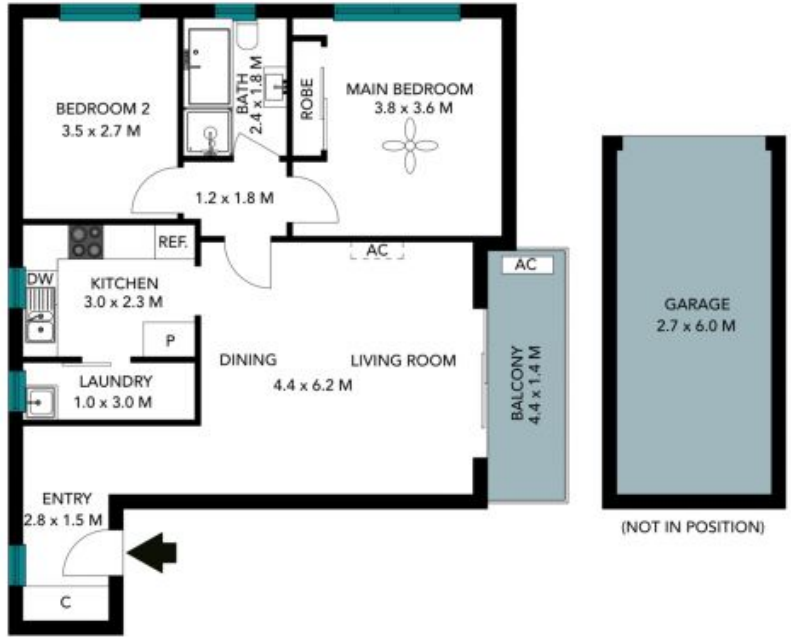
0411 491 122



Ruby Johnson

0432 869 227

9/53 King Street
Wollstonecraft



The floor plan is not to scale, measurements are indicative and in metres. Exterior elements are not in position. Plans should not be relied on, interested parties should make and rely on their own enquiries. All other information provided has been collected from reliable sources but cannot be guaranteed for accuracy.

9/53 King Street
Wollstonecraft



The floor plan is not to scale; measurements are indicative and in metres. All features included in this 3D plan are for inspiration purposes only. This is not an exact replica of the property or the position of exterior elements. Plans should not be relied on. Interested parties should make and rely on their own enquiries.