



26/26-30 Linda Street Hornsby, NSW

2 1 1

### Private apartment just a stone's throw away from everything

Situated at the rear of the complex and nestled in a coveted locale, this residence boasts a prime position in the vibrant heart of Hornsby. Conveniently within strolling distance of Westfield shopping centre, the train station, reputable schools, and charming cafes, it offers unparalleled accessibility to essential amenities.

**Price:** \$610 Per week

**Bond:** \$2,440

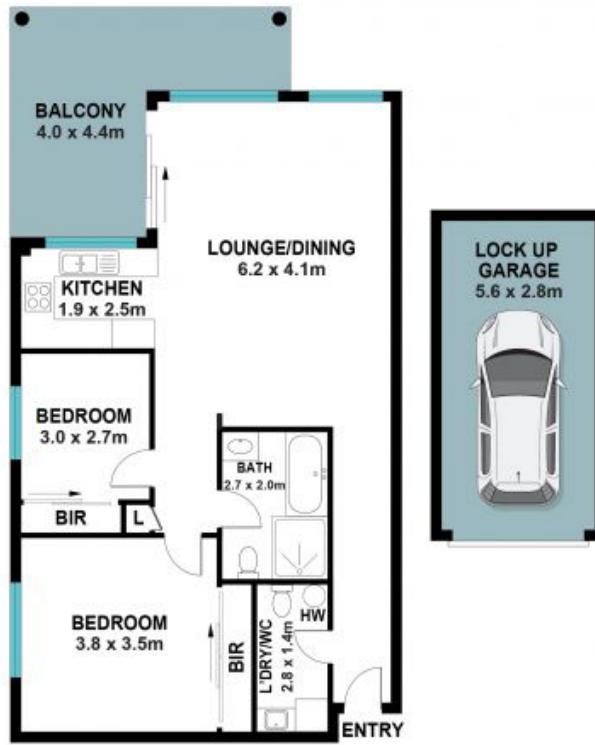
**Available Date:** 14/06/2024



**Brad Sargent**

0413 773 423

26/26 Linda St,  
Hornsby



The floor plan is not to scale, measurements are indicative and in metres. Exterior elements are not in position. Plans should not be relied on interested parties should make and rely on their own enquiries. All other information provided has been collected from reliable sources but cannot be guaranteed for accuracy.