

3/7 Chapman Avenue Beecroft, NSW 2 2 2

'The Croft' apartment, exceptional craftsmanship and convenience

Exuding space and sophistication in the heart of Beecroft, this contemporary residence of 'The Croft' offers aspirational apartment living amid one of the area's most luxurious boutique developments and iconic addresses. Boasting a light washed layout with high-end finishes, a private courtyard and wonderful seclusion in a desirable community, it's a perfect lock-and-leave prospect that's steps from everything.

Price: Contact Agent
Council Rates: \$279.00 p/q
Water Rates: \$171.00 p/q
Strata Rates: \$1,301.00 p/q



Kevin Dearlove

0403 338 302

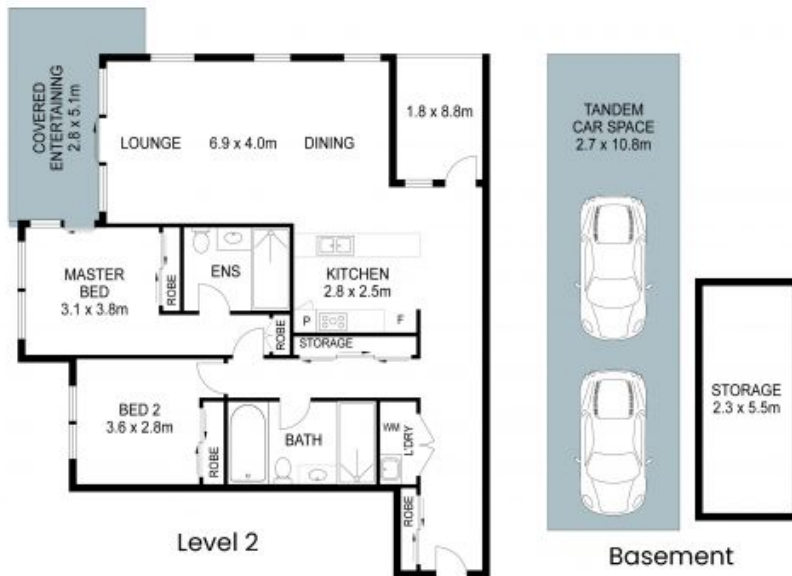


Leo Li

0404 917 188

3/7 Chapman Avenue, Beecroft

2 2 2 2 113m²



THIS IS AN ARTIST'S IMPRESSION - ALL DIMENSIONS, LAYOUTS AND TREES ARE APPROXIMATE
ALL INTERESTED PARTIES SHOULD MAKE AND RELY ON THEIR OWN ENQUIRIES

