

8 Richenda Street Ormeau Hills, QLD

4

2

2

Picture perfect, vacant, and move-in ready.

Experience the ultimate first home family retreat at 8 Richenda Street, Ormeau Hills. Currently empty and ready to occupy immediately, this charming yet contemporary residence combines comfort, style, and convenience. In a highly desirable, tranquil location on a corner block with reserve opposite, you are a brisk tree-lined stroll away from a wonderfully family-friendly community park with picnic tables, open grassland for recreation, gym equipment, and a bike track perfect for little ones learning to ride.

Price:

Offers Over \$795,000



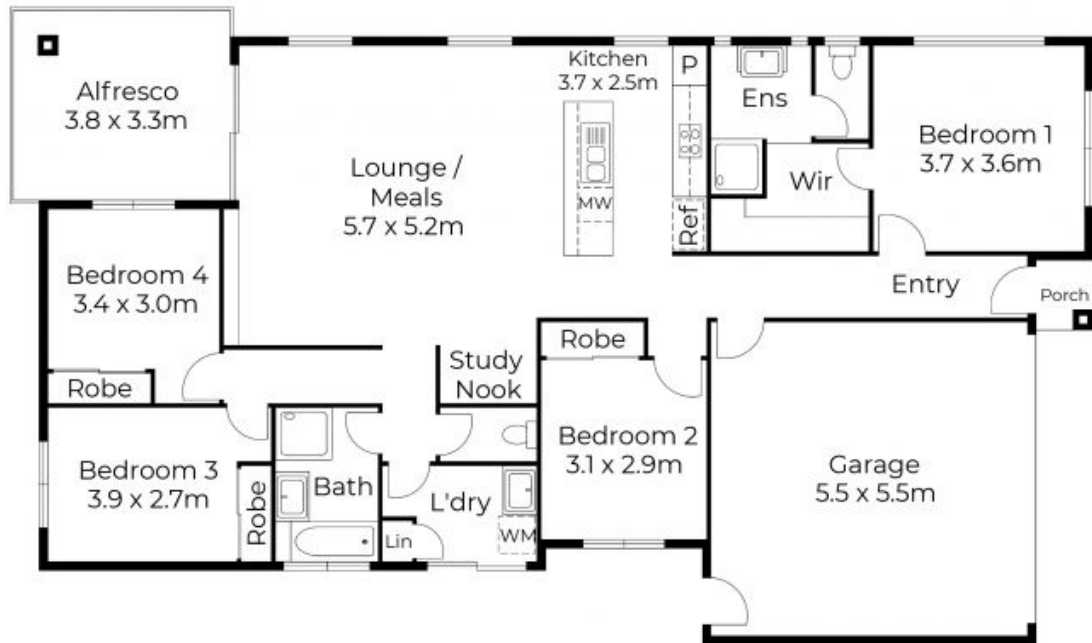
Shane Evans

0416 193 663



Shane Evans

0416 193 663



Floor plans and site plans are for illustrative purposes only. They are not part of any legal document or title and are subject to errors, omission, and inaccuracies. Whilst every attempt has been made to ensure the accuracy of this plan, measurements of doors, windows, rooms, cupboards etc are approximate only.

APPROXIMATE AREA
 LIVING AREA : 135m²
 TOTAL AREA : 183m²



Floor plans and site plans are for illustrative purposes only. They are not part of any legal document or title and are subject to errors, omission, and inaccuracies. Whilst every attempt has been made to ensure the accuracy of this plan, measurements of doors, windows, rooms, cupboards etc are approximate only.

APPROXIMATE AREA
LIVING AREA : 135m²
TOTAL AREA : 183m²