

1/234 Pacific Highway Lindfield, NSW



### 500m to rail from full brick apartment with easy level access

Filled with light, this spacious full brick garden apartment with 139sqm approx. on title, enjoys incredible convenience with a level 500m stroll to rail and footsteps to Lindfield Public School. An ideal first home or downsize with a level front entry point. Spotless throughout with generous interiors including large living and dining areas flowing to a covered balcony and camellia garden. Beautifully equipped kitchen. Bedrooms feature extensive built-in robes and share a full bathroom with separate toilet. In Killara High School catchment.



**Steven Kourdis**

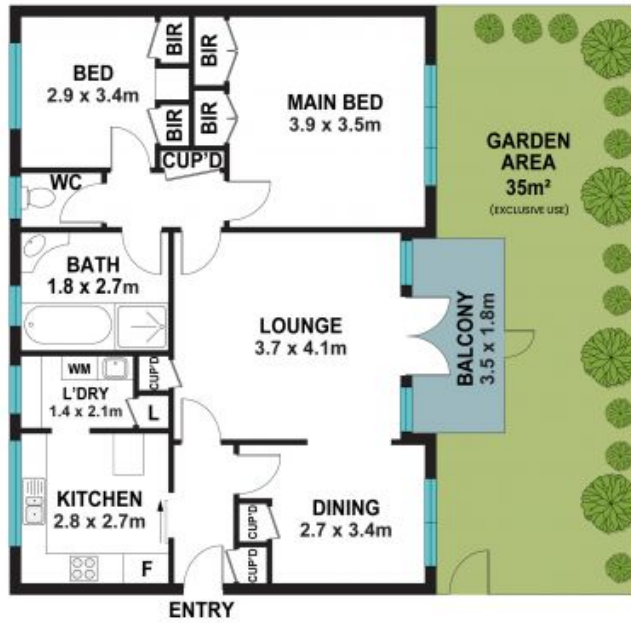
0402 555 675



**Ryan Woo**

0410 884 680

1/234 Pacific Highway  
Lindfield



Internal and Balcony area: 83m<sup>2</sup>  
Storage and Car Space area: 24m<sup>2</sup>  
Garden area: 35m<sup>2</sup>  
Total area (approx): 142m<sup>2</sup>

The site plan and floor plan are not to scale; measurements are indicative and in metres. Bushes and trees are placed for illustration purposes. Plans should not be relied on. Interested parties should make and rely on their own enquiries. All other information provided has been collected from reliable sources but cannot be guaranteed for accuracy.