

13/7 Bortfield Drive Chiswick, NSW

3  1  1 

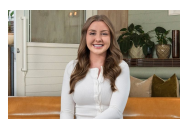
Oversized apartment

This elevated apartment provides a blissful lifestyle of privacy, light and ease. The spacious and instantly appealing oasis is set on the first floor of a well maintained security block and showcases bright and open interiors, a covered balcony capturing a heavenly breeze and a picturesque outlook. An incredible location completes the package, an easy stroll from Chiswick village shops and cafes, parks, buses and ferry.

Price: \$780 per week

Bond: \$3,120

Available Date: 29/05/2024



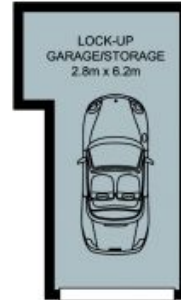
Jaydn Frintzilas

0468 998 294



Georgina Williams

0434 808 839



The floor plan is not to scale, measurements are indicative and in meters. Exterior elements are not in position. Plans should not be relied on. Interested parties should make and rely on their own enquiries. All other information provided has been obtained from reliable sources but cannot be guaranteed for accuracy.

13/7 Bortfield Drive, Chiswick

