

1 Withers Street Arncliffe, NSW

2

1

1

Historic elevated landmark, once-in-a-century opportunity

Welcome to Willella, a beguiling Federation sanctuary, on the market for the first time in its 120 year-plus history.

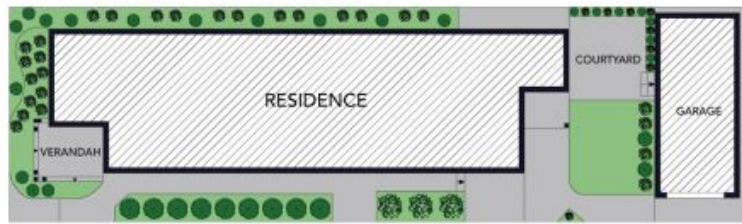
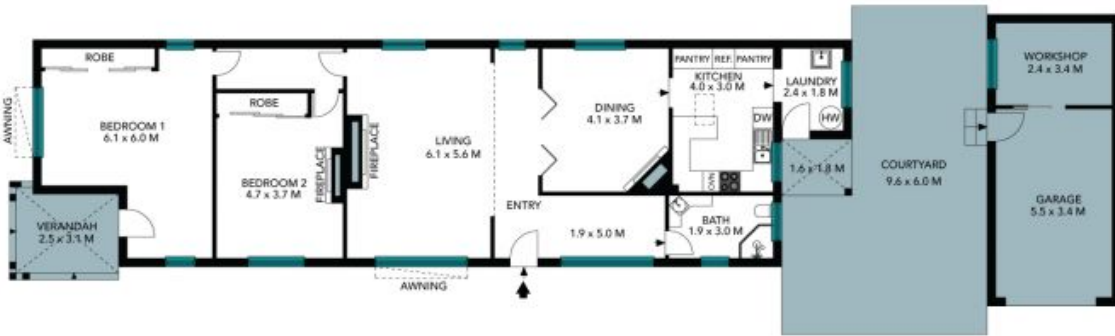
Price:

SOLD BY SAM ABBAS | \$1,885,000



Sam Abbas

0406 750 075



Site Plan



The site plan and floor plan are not to scale; measurements are indicative and in metres. Bushes and trees are placed for illustration purposes. Plans should not be relied on. Interested parties should make and rely on their own enquiries. All other information provided has been collected from reliable sources but cannot be guaranteed for accuracy.

1 Withers Street
Arncliffe



The floor plan is not to scale, measurements are indicative and in metres. All features included in this 3D plan are for inspiration purposes only. This is not an exact replica of the property or the position of exterior elements. Plans should not be relied on. Interested parties should make and rely on their own enquiries.