



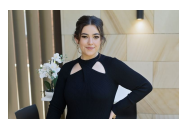
4/20 Upper Avenue Road Mosman, NSW



Character filled Art Deco ground floor apartment

This character filled apartment is set on the ground floor of a beautifully preserved Art Deco block of 4 apartments. Full of period features including high ceilings, picture rails and fireplace, it will delight with its classic character and quality lifestyle in this prestige position. Set in a convenient location with a private and leafy outlook from every window and offers a flexible floorplan that provides a sense of space with semi like proportions.

Price: Leased
Available Date: 08/06/2024



Alicia Sudol

0459 996 944

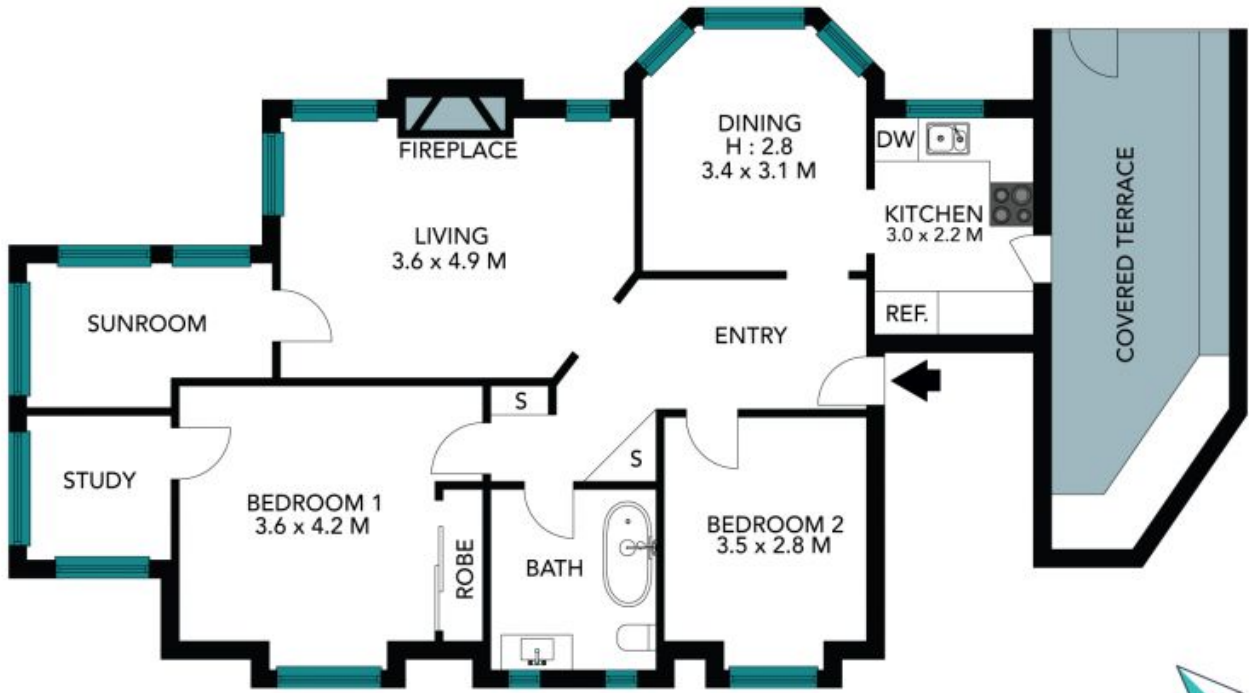


Sarah Cass

0478 086 411

4/20 Upper Avenue Road
Mosman

STONE



The floor plan is not to scale, measurements are indicative and in metres. Certain elements are not in position. Plans should not be relied on. Interested parties should make and rely on their own enquiries. All other information provided has been collected from reliable sources but cannot be guaranteed for accuracy.

4/20 Upper Avenue Road
Mosman

STONE



The floor plan is not to scale; measurements are indicative and in metres. All features included in this 3D plan are for inspiration purposes only. This is not an exact replica of the property or the position of exterior elements. Plans should not be relied on. Interested parties should make and rely on their own enquiries.