



2733 Wisemans Ferry Road Mangrove Mountain, NSW

3

1

2

SOLD BY SCOTT WALL!

20-acres of paradise where comfort meets practicality in a beautifully maintained property. This estate boasts expansive cleared and shaded pastures perfect for livestock, alongside stunning, mature gardens.

Price: \$2,200,000



Scott Wall

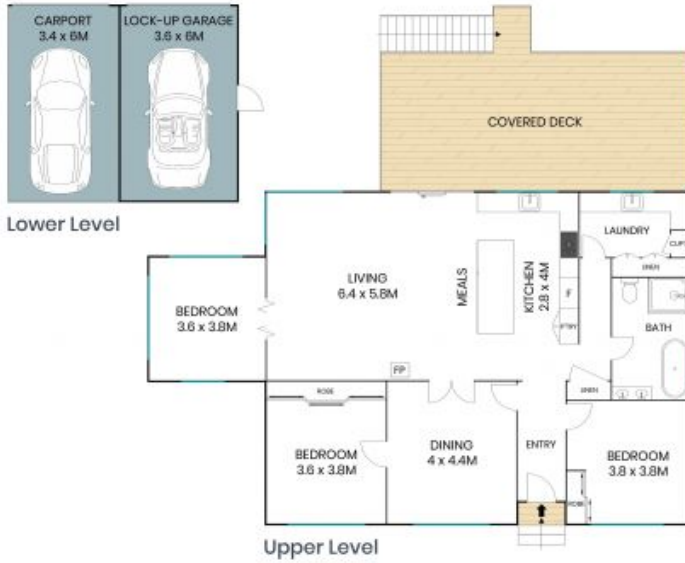
0413 965 616



Kaela Wall

0434 726 944

2733 Wisemans Ferry Road
Mangrove Mountain



Internal Area: 188sqm
External Area: 64sqm



The site plan and floor plan are not to scale; measurements are indicative and in metres. Bushes and trees are placed for illustration purposes. Plans should not be relied on. Interested parties should make and rely on their own enquiries. All other information provided has been collected from reliable sources but cannot be guaranteed for accuracy.