

11 Thiele Street Spring Farm, NSW

4 2 2

### Immaculate four-bedroom family home in Spring Farm

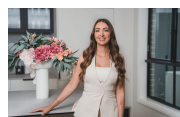
Discover the perfect blend of comfort and style in this stunning four-bedroom home located in the sought-after community of Spring Farm. Designed with the modern family in mind, this property offers an array of premium features and ample space for both relaxation and entertaining.

Price: \$990,000 - \$1,070,000



**Anthony Grima**

0421 228 414



**Rebecca Philp**

0403 613 271

STONE



## 11 Thiele St, Spring Farm NSW 2570



The floor plan is not to scale, measurements and in metres. Exterior elements are not in position.  
Plans should not be relied on. Interested parties should make and rely on their own enquiries.  
All other information provided has been collected from reliable sources but cannot be guaranteed for accuracy.