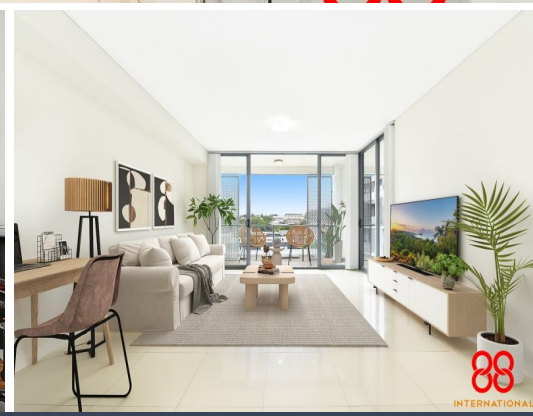
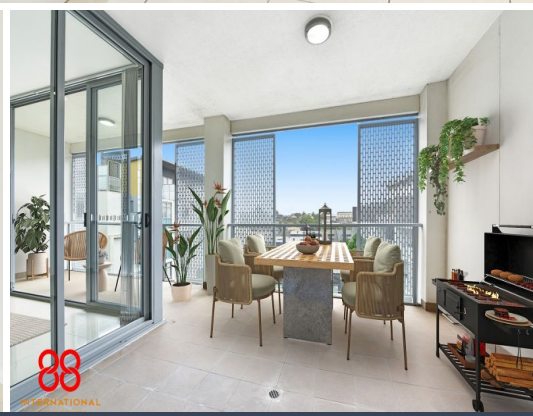
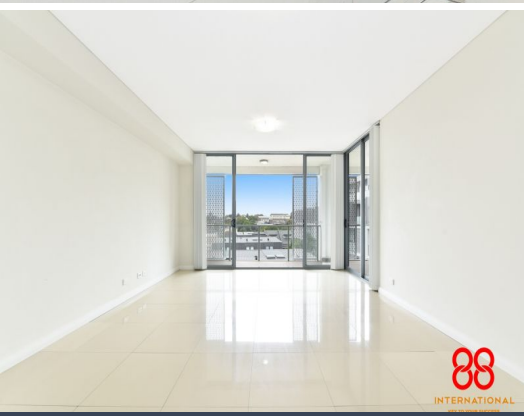


STONE



2512/43-45 Wilson Street BOTANY, NSW



### An oversized 1 Bedroom + Study with uninterrupted morning sun

This Spacious 1+ Study apartment is designed with quality inclusions & modern finishes. The separate study room is so spacious that it could be potentially used as a second bedroom. It's located next to the Kids & Dogs friendly Tannery Park. Filled with ample natural unblock Morning-Light, this generous security apartment offers a convenient and affordable entry into the Eastern Suburbs market.

**Price:** ONLY \$599,000 OR HIGHER! MORTGAGE IN POSSESSION

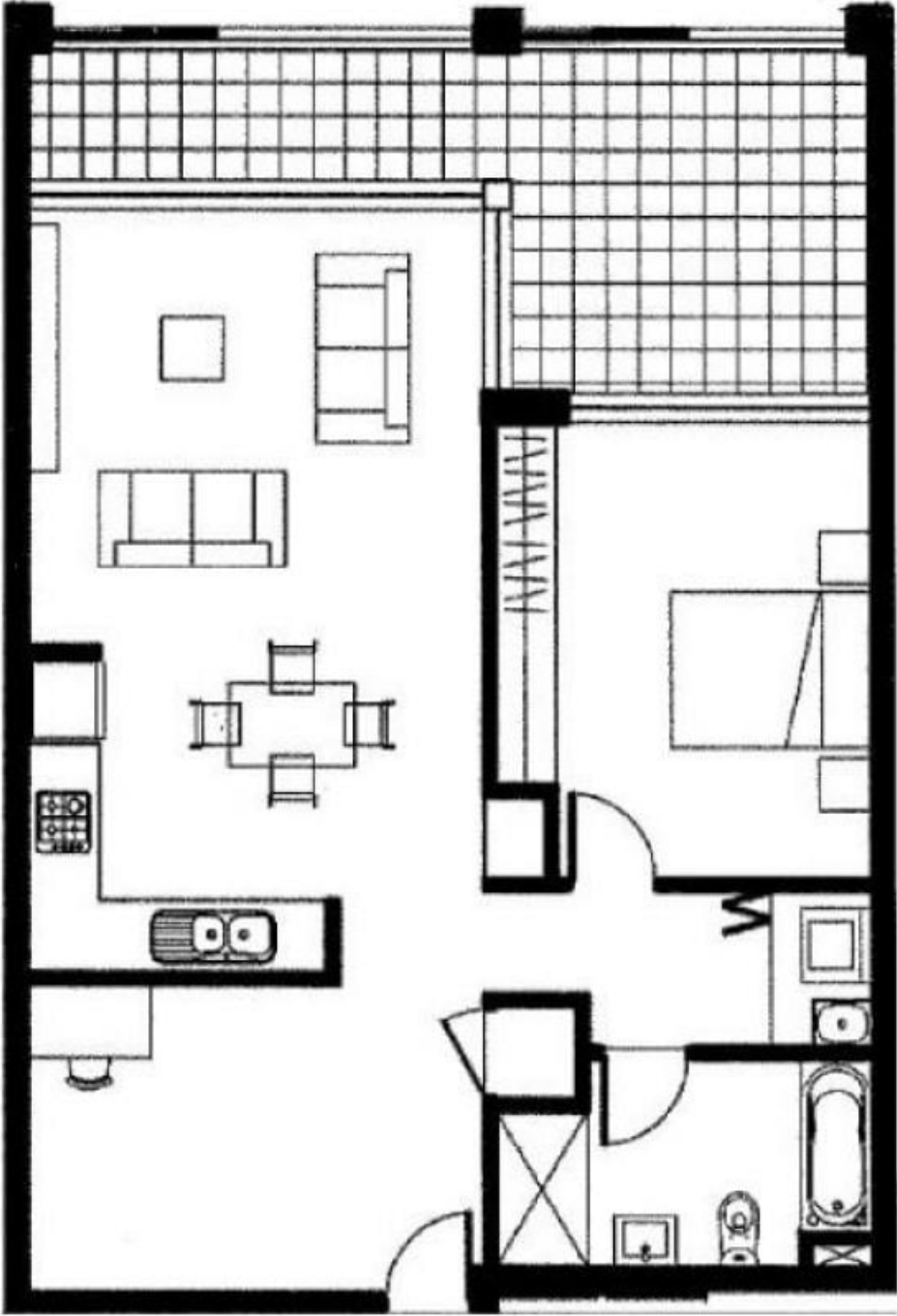


**Ivan Gunawan**  
0421 032 760



**Karlina Widjaja**  
0499 882 288

Total 105 m<sup>2</sup>  
1 Parking



Disclaimer:  
This floor plan including furniture, fixture measurements and dimensions are approximate and for illustrative purposes only.

