



D212/28 Shepherd Street Liverpool, NSW

2  1  2  1 

MODERN & CONVENIENT 2 BEDROOM + STUDY IN THE HEART OF LIVERPOOL

Introducing a 2-bedroom Plus Study apartment in Liverpool, conveniently located near the train station & Liverpool CBD. This contemporary & elegant residence boasts mesmerizing unblock views.

A separate private study room is ideal for use as a home office or as a 3rd Bedroom.

Price: \$670 per week

Bond: \$1

Available Date: 08/05/2024

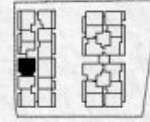


Faentina Young

0416 808 801



THE **x**BINDERY
THE PAPER MILL ON REDDERS RIVER



2 BEDROOM + MEDIA ROOM

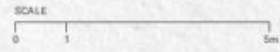
APARTMENT NUMBER	LEVEL
D2.12	2
D3.12	3
D4.12	4
D5.12	5

AREA	
INTERNAL	81m ²
EXTERNAL	10m ²
TOTAL	96m²

WOOD
BAGOT
ASPECT Studios™



NOTES: 1. Furniture items not included. 2. Refer to schedule of finishes for list of finishes, materials and colours.



LIVEATTHEPAPERMILL.COM.AU