



1212/1 Steam Mill Lane Haymarket, NSW 2  2  1 

PREMIUM LIFESTYLE 2-BEDROOM APARTMENT IN DARLING HARBOUR

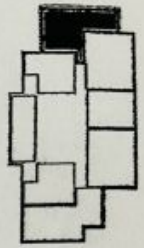
Enjoy the premium lifestyle- Steam Mill Lane Darling Harbour Sydney is a good place for you!

Price: 2 Beds Darling Harbour View \$1,500 per
Available Date: ~~27/06~~ 2024



Faentina Young

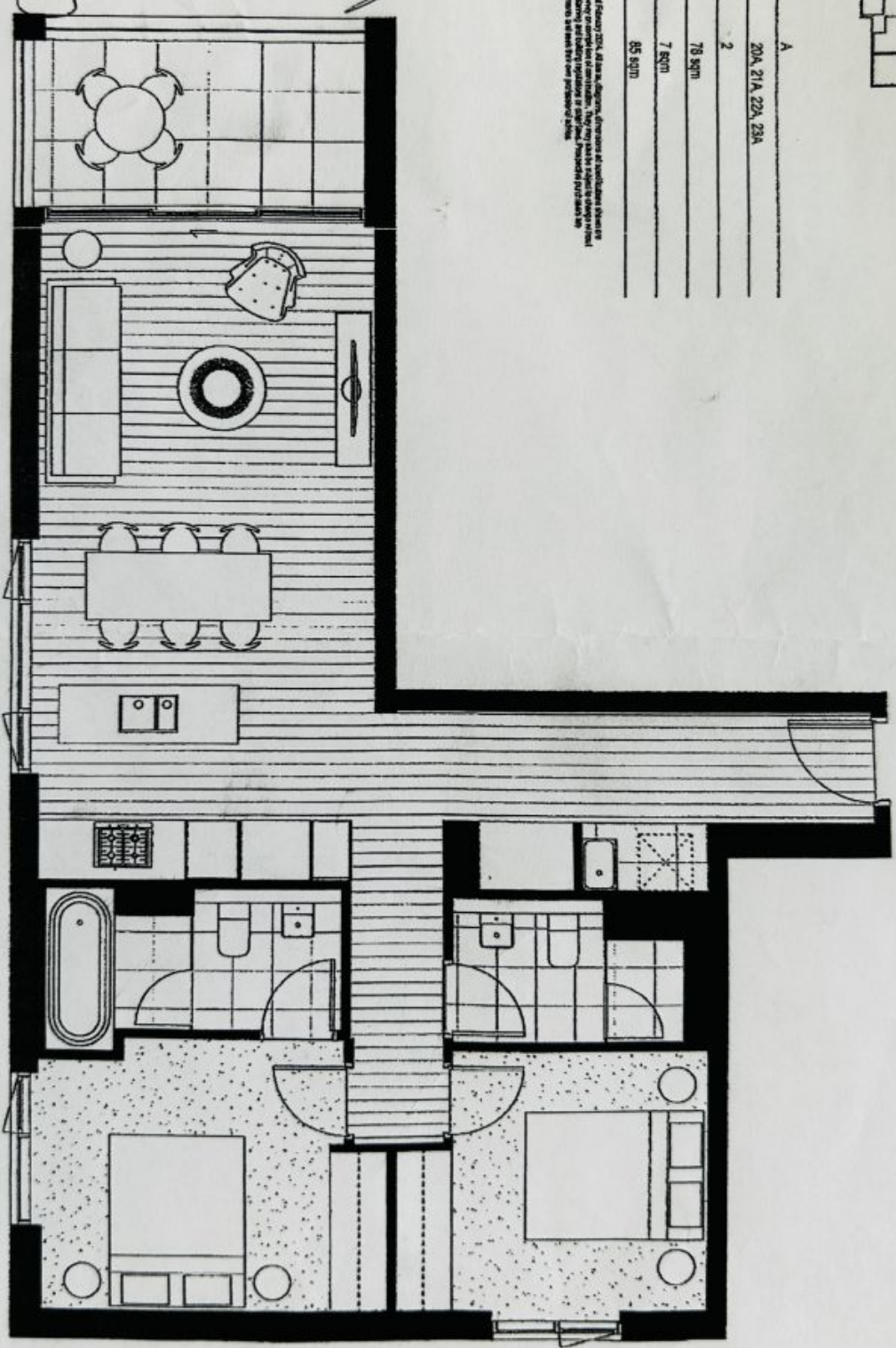
0416 808 801



LAYOUT PLAN

apartment type	A
apartment no.	204, 214, 224, 234
bedrooms	2
apartment area	78 sqm
balcony area	7 sqm
total apartment area	85 sqm

These are typical floor plans only. All of February 2014, All data are approximate. Dimensions and measurements shown are approximate and are subject to change without notice. They may vary due to changes in design or construction. The actual floor plan measurements are subject to the final construction of the building.



Handwritten signature and notes:
 Licen. SUBIDNO SHALIM
 K. Mawaly Hadayat

