



12 Nimbin Street The Entrance, NSW

3 2 1

Charming Cottage in Prime Location with Endless Potential

Welcome to 12 Nimbin Street, The Entrance-a delightful single-level cottage brimming with character and partially renovated to offer immediate comfort with scope for further improvements to add value. This charming home is perfect for those seeking a versatile property in a prime location, just a short walk from The Entrance shopping centre, tourist hub, patrolled beaches, and ocean baths.

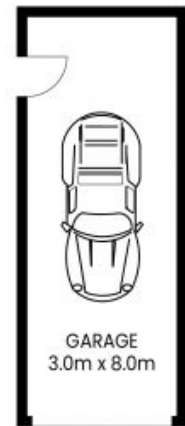
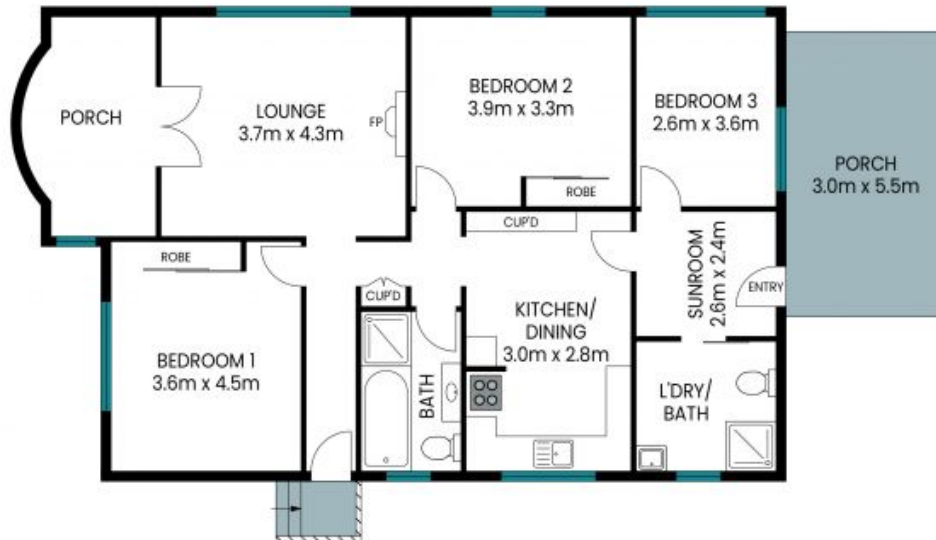
Price: \$745,000



Tony Trinder

0437 787 221

12 Nimbin Street
The Entrance



Internal Area: 128 sqm
External Area: 20 sqm
Garage Area: 24 sqm
Total Area: 172 sqm

PLEASE NOTE: These Floor and Site Plans have been generated for marketing purposes and are to be used as a guide only. While all care is taken, no guarantee can be given in respect of accuracy, sizes and dimensions are approximate, actual may vary.

