



6/46-48 Peterborough Avenue Lake Illawarra, NSW

2 

1 

1 

**SOLD BY STONE REAL ESTATE | DARNELL HASELAU & EMILY BOLTON**

Price:

\$535,000

Stone's throw to Warilla Beach & Reddall Reserve



**Darnell Haselau**

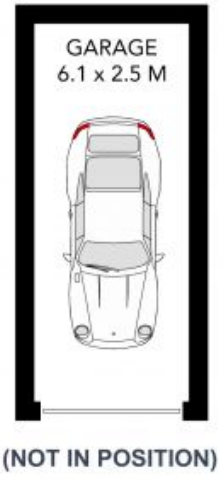
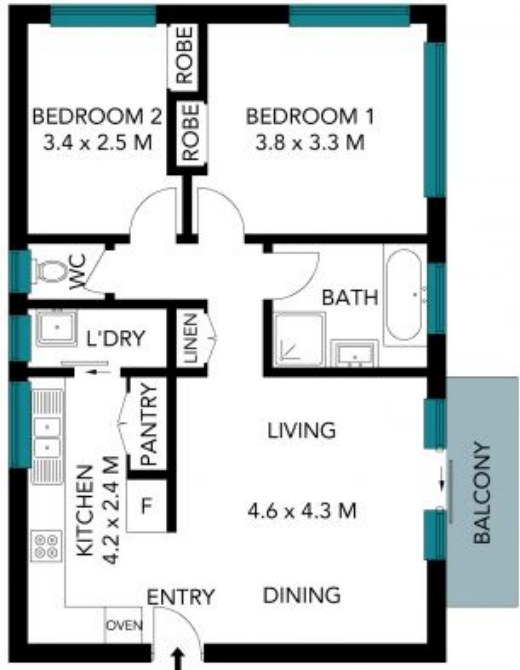
0426 400 240



**Emily Bolton**

0437 774 036

6/46-48 Peterborough Avenue  
Lake Illawarra



The site plan and floor plan are not to scale; measurements are indicative and in metres. Bushes and trees are placed for illustration purposes. Plans should not be relied on. Interested parties should make and rely on their own enquiries. All other information provided has been collected from reliable sources but cannot be guaranteed for accuracy.