



12/9-11 Preston Avenue Engadine, NSW

3 2 2

Epitome of modern living

Price: \$830,000  
Council Rates: \$368.00 p/q  
Water Rates: \$171.50 p/q  
Strata Rates: \$660.00 p/q



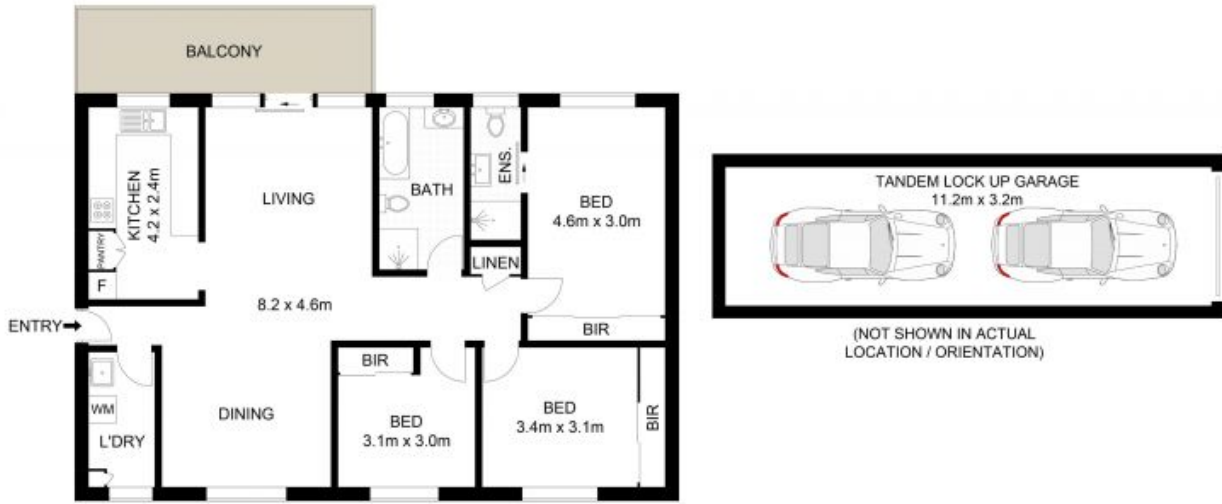
Rhys Christofa

0415 684 877



Brayden Watson

0415 122 733



The floor plan is not to scale; measurements are indicative and in metres. Bushes and trees are placed for illustration purposes. Plans should not be relied on. Interested parties should make and rely on their own enquiries. All other information provided has been collected from reliable sources but cannot be guaranteed for accuracy.