



22/1 Lovett Street Manly Vale, NSW 2  1  1 

### Beautifully renovated top floor apartment

Conveniently positioned on a leafy residential street within minutes of B-Line buses, cafes and shopping, this bright and spacious apartment puts an enviable northern beaches lifestyle within easy reach and is a true haven. Sumptuously renovated from top to bottom, with customised fixtures and finishes of the highest quality, this gorgeous home requires nothing more than to move in and enjoy the incredible lifestyle on offer.

**Price:** Price Guide \$1,100,000  
**Council Rates:** \$403.90 p/q  
**Water Rates:** \$171.41 p/q  
**Strata Rates:** \$1,025.00 p/q



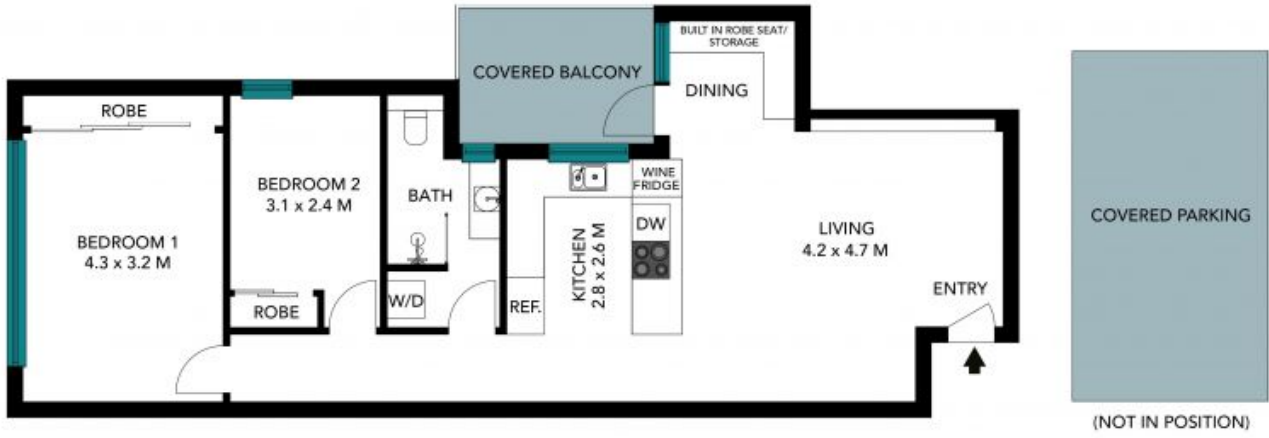
**Chris Lewis**

0431 179 861



**Louise Ashdown**

0414 764 108



22/1 Lovett St  
Manly Vale



The floor plan is not to scale; measurements are indicative and in metres. All features included in this 3D plan are for inspiration purposes only. This is not an exact replica of the property or the position of exterior elements. Plans should not be relied on. Interested parties should make and rely on their own enquiries.