



60 Sutton Place Cannon Hill, QLD

6 

3 

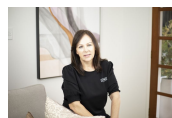
2 

Exclusive Golf Frontage Living

Rarely available within 11km of a CBD is your chance to own an exclusive slice of property with direct golf course frontage. Imagine being one of the fortunate few, living in a brand-new home and being part of this beautiful community where new land is no longer available.

Price:

CONTACT AGENT



Leanne Gunn

0413 817 092



Leanne & Bridgette

0413 817 092

