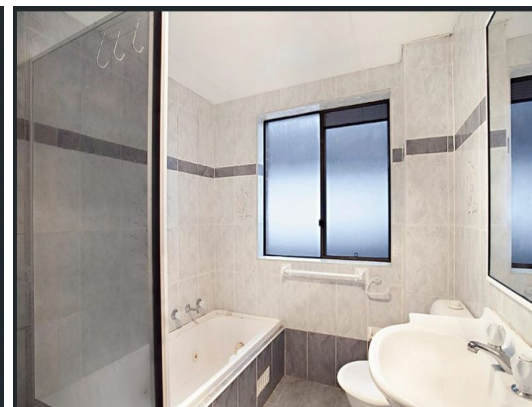
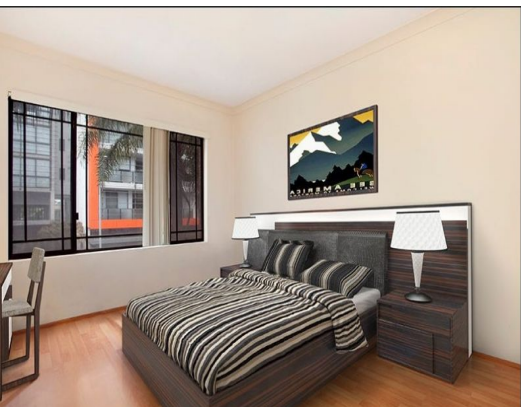


STONE



3/13 Cowper Street Parramatta, NSW

2 

1 

1 

Minutes walk to Parramatta Station with lock up garage

Located within minutes walking distance to Parramatta station, Westfield shops, schools, and local parklands, is a rare opportunity to live in one of Parramatta's most popular streets. Offering a large and open plan living area leading onto an entertainer's style balcony on the middle floor. There is also an abundance of natural light with a north east aspect plus a single lock up garage.

Price: \$620.00 pw

Available Date: 26/06/2024

STONE Leasing Team
02-9630 8899