

10 Prospero Close Rosemeadow, NSW

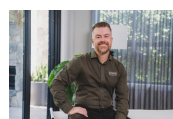
3 1 2

Oversized family home in a quiet cul-de-sac

Discover this oversized brick home on a 765.7m2 block, nestled in a tranquil cul-de-sac in the sought-after suburb of Rosemeadow. Designed with family living in mind, this residence offers a perfect blend of comfort, convenience, and ample space.

Price:

Contact Agent



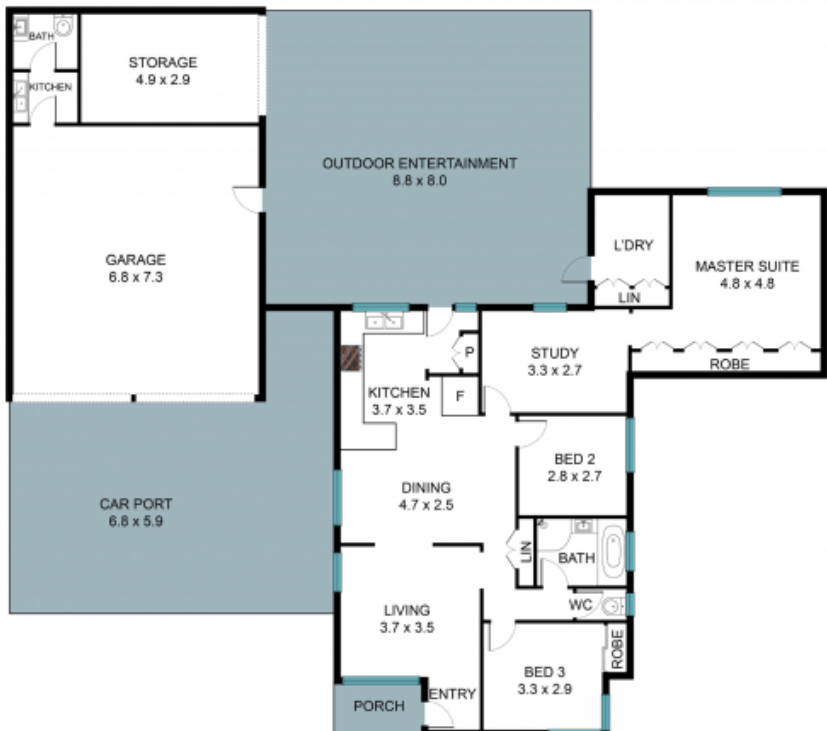
Gary Luke

0418 451 105



Kaitlin Hall

0404 529 516



10 Prospero Cl, Rosemeadow NSW 2560



The floor plan is not to scale, measurements and in metres. Exterior elements are not in position.
Plans should not be relied on. Interested parties should make and rely on their own enquiries.
All other information provided has been collected from reliable sources but cannot be guaranteed for accuracy.