

10/44 Belmore Street Burwood, NSW



Super Location and Convenient in the Centre of Burwood

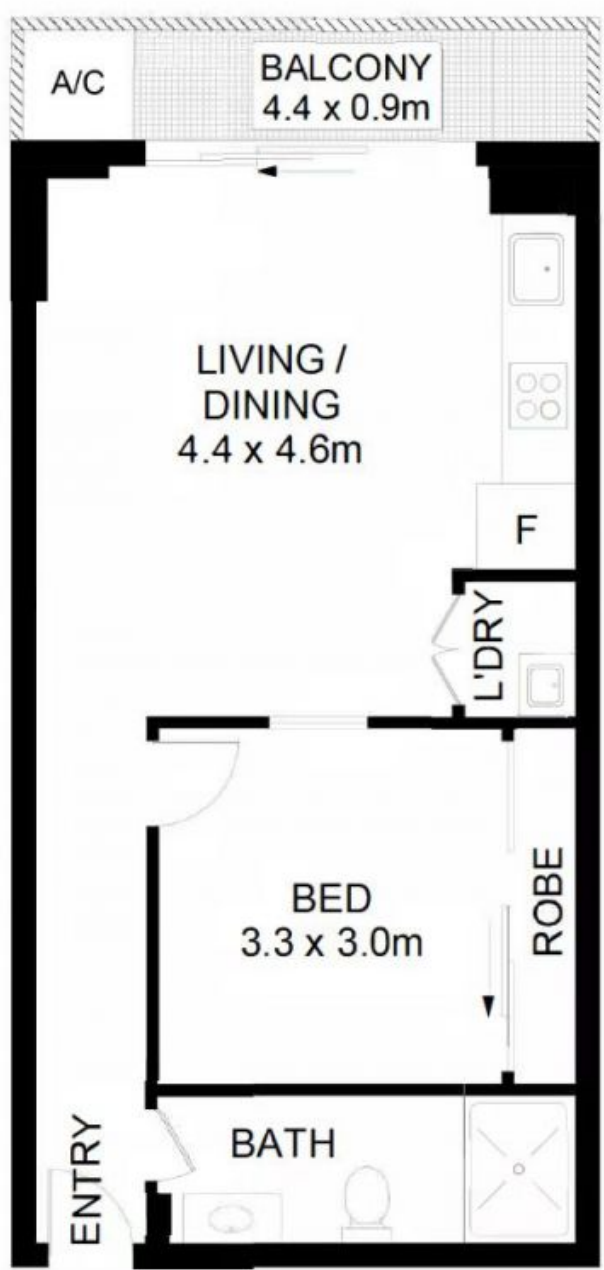
The Contemporary Apartment is elevated boutique complex with an easy life style and set in the ultra-convenient "Burwood premier central". This luxuriously appointed residence offers the astute tenants the finest of modern living.

Price: SOLD
Council Rates: \$507.00 p/q
Water Rates: \$178.00 p/q
Strata Rates: \$859.15 p/q



Li (sammi) Fan

0415 959 888



UNCOVERED