

11/40-42 Lydbrook Street Westmead, NSW

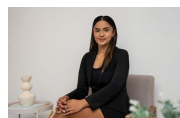
2 2 1

## 2 bedder with a rent return of \$640 per week

This two-bedroom apartment showcases stylish interiors, a peaceful outlook & offers an exciting opportunity for an astute investor or growing family. Positioned in a secure complex, this spacious residence boasts the ultimate lifestyle of convenience, within close proximity to Westmead health precinct including both public & private hospitals, highly regarded schools, parks, Westmead train station, convenient bus stops & Coles

- Contemporary kitchen with stone topped island bench,
- Open plan living and dining adjacent to kitchen with floating wood floors
- Light filled master bedroom with ensuite with mirrored built-ins in all bedrooms
- North and east facing balcony
- Fully tiled, master bathroom with separate bath and shower
- Lock-up garage
- Internal laundry

Price: \$540,000-\$560,000



**Natasha Chand**

0414 687 418



**Natasha Chand**

0414 687 418



The floor plan is not to scale; measurements are indicative and in metres. Exterior elements are not in position. Plans should not be relied on. Interested parties should make and rely on their own enquiries. All other information provided has been collected from reliable sources but cannot be guaranteed for accuracy.

11/40-42 Lydbrook Street  
Westmead

STONE



The floor plan is not to scale; measurements are indicative and in metres. All features included in this 3D plan are for inspiration purposes only. This is not an exact replica of the property or the position of exterior elements. Plans should not be relied on. Interested parties should make and rely on their own enquiries.