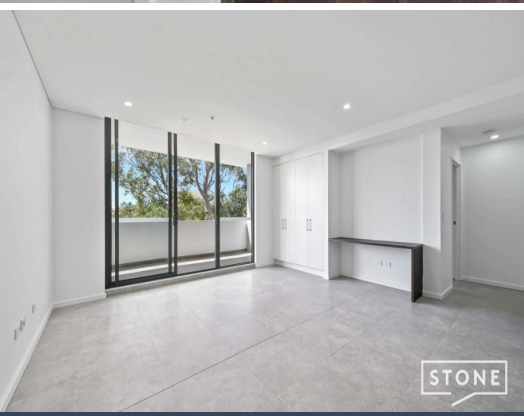


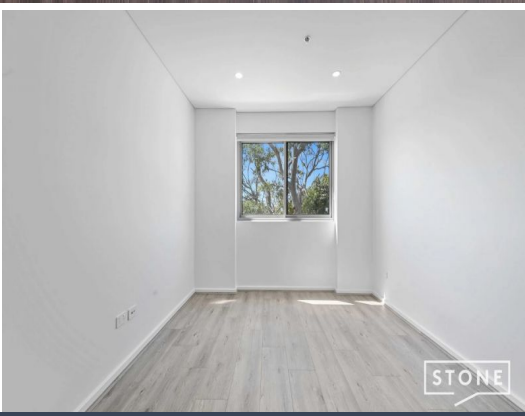
STONE



STONE



STONE



STONE



STONE

108/39 Post Office Street Carlingford, NSW      2      2      1

### Luxurious 2 Bedroom Apartment In Prime Location!

Conveniently positioned in Carlingford, this two bedroom residence is situated in this brand new security complex. Featuring stylish interiors, finished with the finest quality fixtures and fittings. Located in the Carlingford Public School catchment, just moments to Carlingford court's entertainment quarter. Easy access to T-way bus services, future light rail and parklands.

**Price:** \$730.00 pw  
**Available Date:** 29/05/2024

Stone Real Estate -  
Head Office