

93/212 Mona Vale Road St Ives, NSW



Whisper-quiet 1-bedroom ground-floor apartment in ultra-convenient location

The modern lines and spacious open-plan interiors are just the beginning for this impressive 1-bedroom ground-floor apartment. Enjoying a quiet position at the rear of the block, and boasting an incredible wrap-around entertaining courtyard, this apartment is in a prime position, a short walk to buses, schools and St Ives Village, and in St Ives Nth Public and St Ives High School zone.

Price: Under Contract
Council Rates: \$358.00 p/q
Water Rates: \$172.10 p/q
Strata Rates: \$1,179.89 p/q



Claudia Conroy

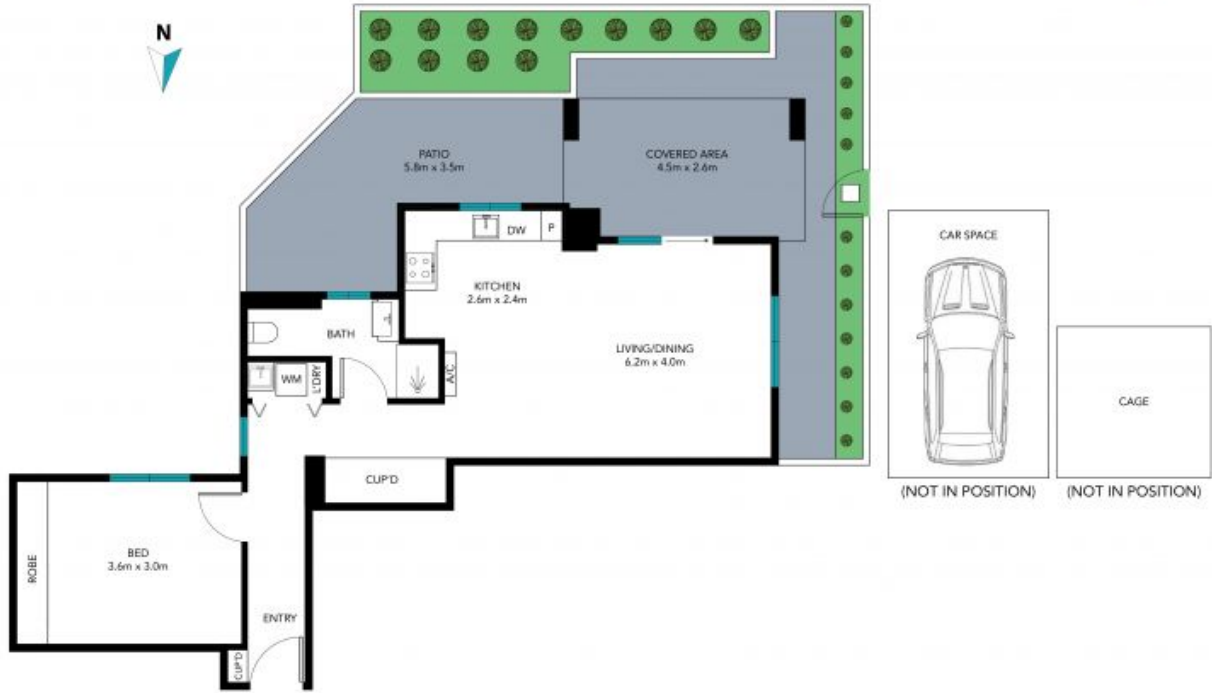
0449 945 358



Max Ma

0468 398 868

Unit 93/212 Mona Vale Road
St. Ives



Total area(approx) : 105 sqm

The site plan and floor plan are not to scale; measurements are indicative and in meters. Bushes and trees are placed for illustration purposes. Plans should not be relied on. Interested parties should make and rely on their own enquire. All other information provided has been collected from reliable sources but cannot be guaranteed for accuracy.