



11/1-3 Belgian Street Westmead, NSW 3 2 1

Double Brick Three Bedroom Apartment

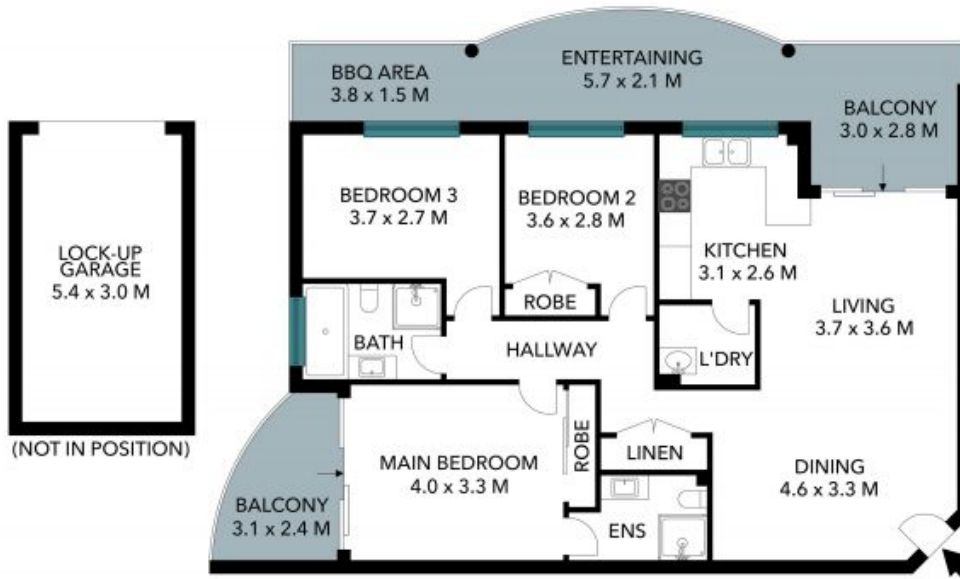
Set within a low-rise boutique building, offering 142sqm of living space, this double-brick apartment presents a fantastic opportunity for first-home buyers or investors. It is ideally placed in a high-growth location, footsteps to Westfield, trains, upcoming light rail, local shops, and Parramatta Park.

Price: Under Offer



Chris Kypreos

0432 354 445



The floor plan is not to scale; measurements are indicative and in metres. Exterior elements are not in position. Plans should not be relied on. Interested parties should make and rely on their own enquiries. All other information provided has been collected from reliable sources but cannot be guaranteed for accuracy.

11/1-3 Belgian Street
Westmead

STONE



The floor plan is not to scale; measurements are indicative and in metres. All features included in this 3D plan are for inspiration purposes only. This is not an exact replica of the property or the position of exterior elements. Plans should not be relied on; interested parties should make and rely on their own enquiries.