



B303/433-439 Princes Highway Rockdale, NSW 3 2 2

As-new house-sized unit in village hub

Enjoy the proportions of a house, without the maintenance, right in the centre of Rockdale village.

Price: SOLD BY GEORGE KAMBOUROGLOU  
Council Rates: \$282.30 p/q  
Water Rates: \$268.30 p/q  
Strata Rates: \$1,268.00 p/q



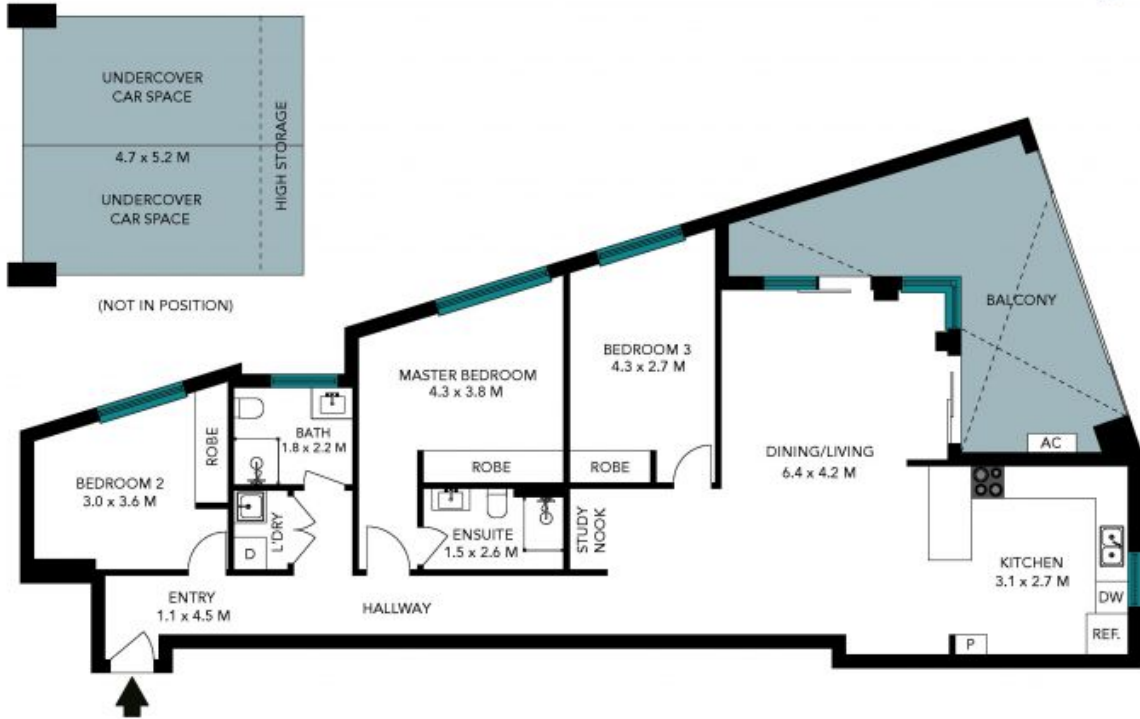
George Kambouroglou

0422 421 111

B303/433-439 Princes Highway  
Rockdale



The floor plan is not to scale; measurements are indicative and in metres. All features included in this 3D plan are for inspiration purposes only. This is not an exact replica of the property or the position of exterior elements. Plans should not be relied on. Interested parties should make and rely on their own enquiries.



The floor plan is not to scale, measurements are indicative and in metres. Exterior elements are not in position. Plans should not be relied on, interested parties should make and rely on their own enquiries. All other information provided has been collected from reliable sources but cannot be guaranteed for accuracy.